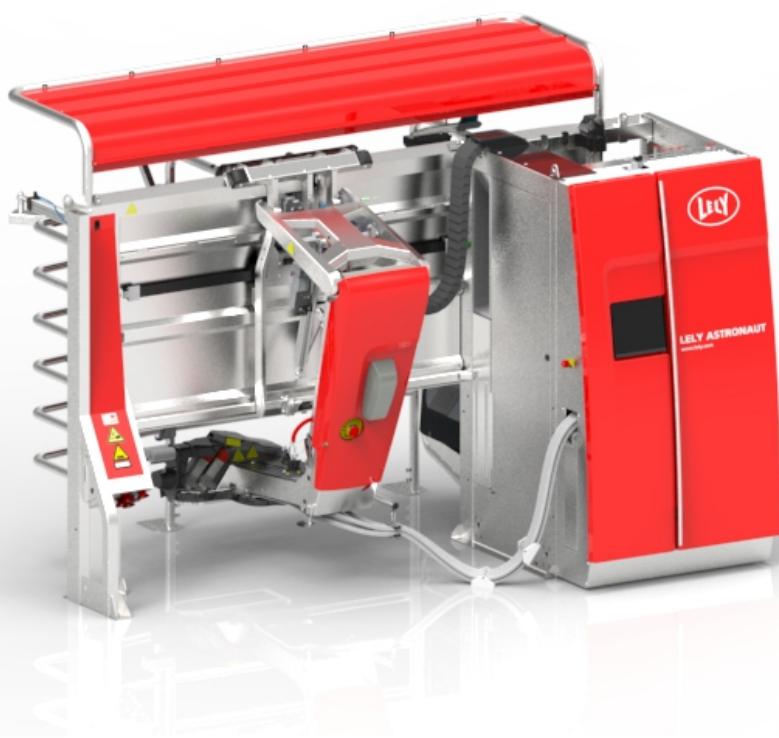


# Lely Astronaut A5

## Milk Transport



## Parts list

5.1005.8568.0 L

English Original





INTENTIONALLY BLANK

# Preface

## Applicability

Type number:	As from serial number:
5.1X05.00XX-X	0003242094

## Spare Parts

When ordering spare parts it is important that you are aware of the type and serial number of your machine. Use only genuine LELY parts.

## Criticality

Criticality = Bulk, 0, 1, 2

- Bulk = Bulk item.
- 0 = Not critical.
- 1 = Not very critical.
- 2 = Critical.

## Explanation of Signs Used in the Parts List

[R] / [RH]	By RH or LH version the position of the part is meant, seen from the rear of the machine.
[L] / [LH]	
[~]	E.g.: LH version is not similar to the RH version, which is actually shown.
[#]	Not available seperately.

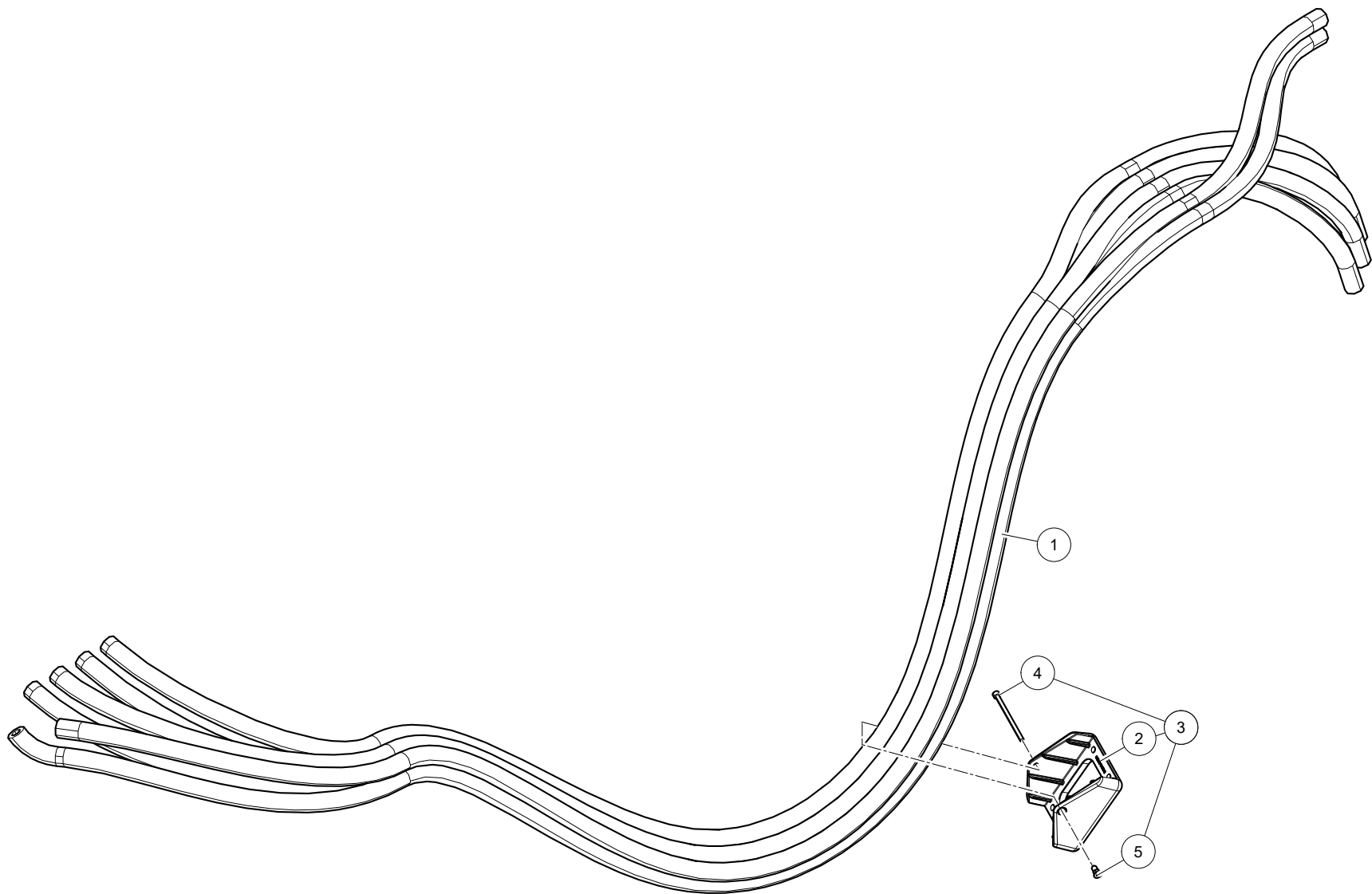


INTENTIONALLY BLANK



# Table of Contents

<b>A</b>	<b>Milk Transport</b>	<b>6</b>
A-1	6-fold Tube	6
A-2	Milk Jar	8
A-3	Sampler Valve	10
A-4	Milk Pump for milk valve type 1	12
A-5	Milk Pump for milk valve type 2	14
A-6	Milk Pump for Power Box P2	16
A-7	Seal kit	18
A-8	Milk Valve (type 1)	20
A-9	Milk Valve (type 2)	22
A-10	Valve Milk Jar	24
A-11	3-Way Valves (Actuator type 2)	26
A-12	3-Way Valves (Actuator type 3)	28
A-13	Milk Valve (Actuator type 2)	30
A-14	Milk Valve (Actuator type 3)	32
A-15	Blow Empty Valve ((LH) type 1)	34
A-16	Blow Empty Valve ((LH) type 2, non-return valve type 1)	36
A-17	Blow Empty Valve ((LH) type 2, non-return valve type 2)	38
A-18	Blow Empty Valve ((RH) type 2, non-return valve type 1)	40
A-19	Blow Empty Valve ((RH) type 2, non-return valve type 2)	42
A-20	Solenoid Blow Empty Valve (type 2)	44
A-21	Valve Guard Sensor	46
<b>B</b>	<b>Milk Filters</b>	<b>48</b>
B-1	Valve	48
B-2	Milk Filter	50
B-3	Twin Filter	52
B-4	Twin Filter XL	54
B-5	Valve (Actuator type 3)	56
B-6	Bracket	58
<b>C</b>	<b>Pre-cooler</b>	<b>60</b>
C-1	Pre-cooler	60
C-2	GLOB	62
C-3	Air Valve	64

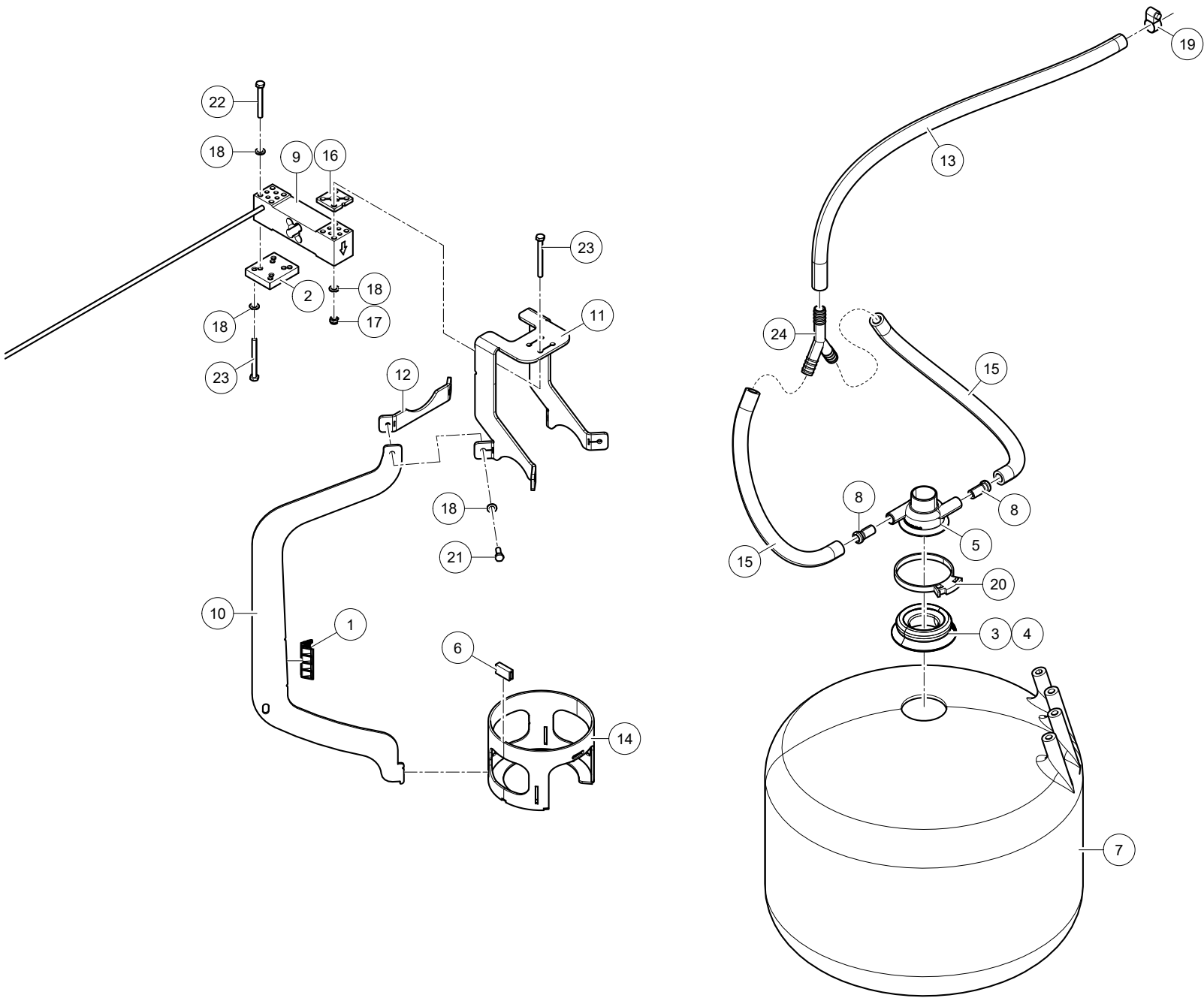


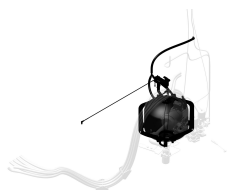


Lely Astronaut A5      Milk Transport      5.1X05.00XX-X      0003242094

Ref.	Part No	Qty.	Description	Techn. info	Criticality	Remark
1	5.9701.2530.0	1	6-fold tube			
2	5.1004.6631.0	2	Wear skid			
3	5.1004.6632.0	2	Wear skid			
4	9.1057.0131.4	2	S.h. bolt	M5x80 DIN912-A2-90 s/s		
5	9.1152.0026.0	2	Blind rivet			







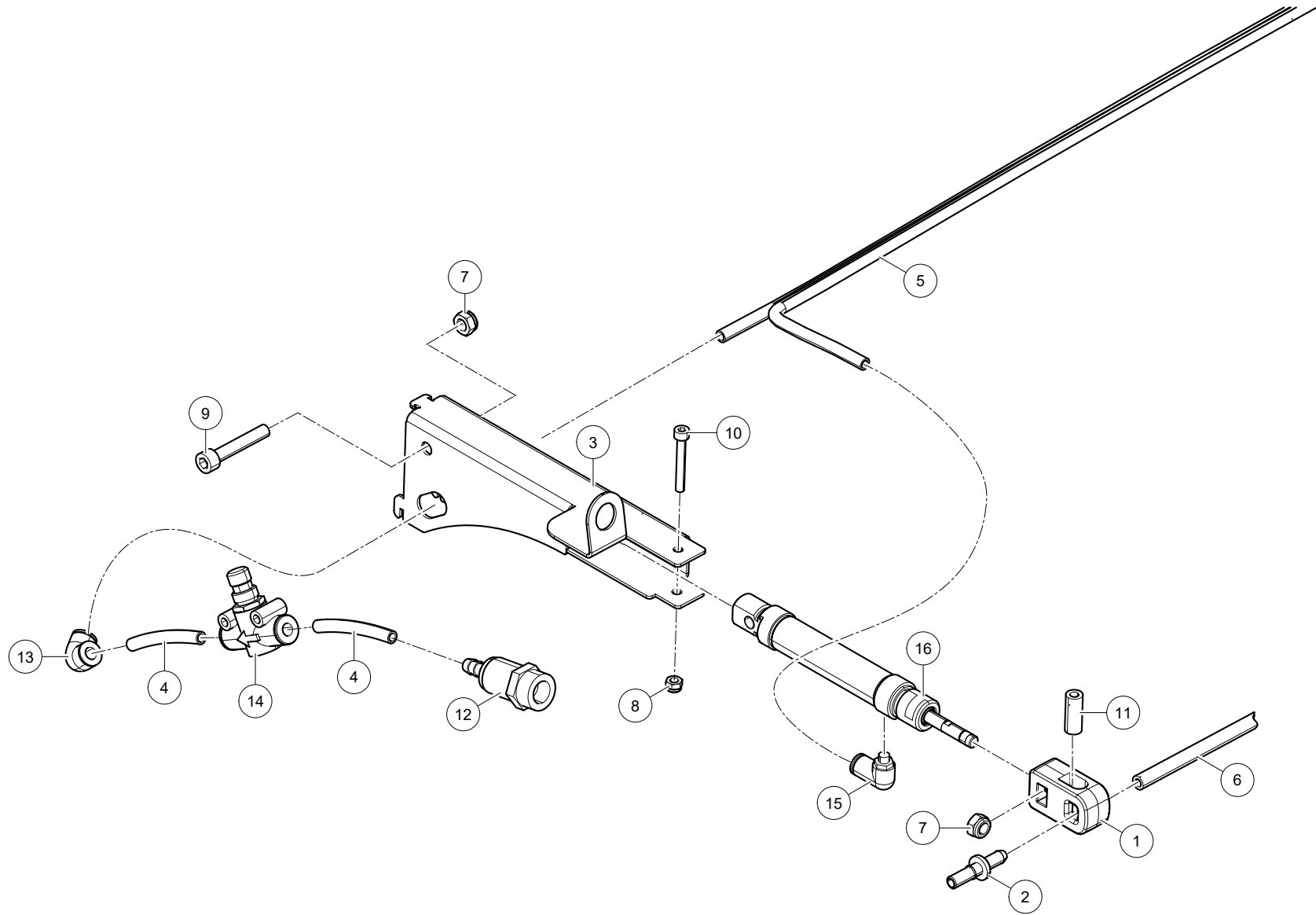
Lely Astronaut A5

Milk Transport

5.1X05.00XX-X

0003242094

Ref.	Part No	Qty.	Description	Techn. info	Criticality	Remark
1	5.1003.0729.0	4	Wedge			
2	5.1003.0745.0	1	Mounting plate			
3	5.1003.0747.0	1	Sealing ring	5-7.5mm		
4	5.1003.0748.0	1	Sealing ring	7.5-10mm		
5	5.1003.0749.0	1	Rinse head			
6	9.1073.0055.3	1	Profile	B823 14x3x3 L=430		
7	5.1004.0645.0	1	Milk recording jar			
8	5.1004.1078.0	2	Restrictor tube			
9	5.1005.2234.0	1	Load cell	with cable and M12 connector		
10	5.1005.2641.0	4	Plate			
11	5.1005.2883.0	1	Bracket			
12	5.1005.2884.0	2	Bracket			
13	9.1185.0065.6	1	Hose	SILIPRESS RED 12,5 x 4 L = 750		
14	5.1005.3306.0	1	Ring			
15	9.1185.0065.6	2	Hose	SILIPRESS RED 12,5 X 4 L = 420		
16	5.1005.3619.0	1	Spacer	Loadcell		
17	9.1030.0021.5	4	Nut	M6 DIN985-A2-2 s/s		
18	9.1048.0090.0	16	Washer	A6.4 DIN125-A2 s/s		
19	9.1066.0022.5	1	Hose clamp	ø11-ø17 s/s		
20	9.1066.0068.2	1	Hose clamp	ø70-ø75		
21	9.1113.0163.1	4	Bolt	M6x16 DIN933-A2-2 s/s		
22	9.1113.0234.2	4	Bolt	M6x50 DIN931-A2-2 s/s		
23	9.1113.0354.2	8	Bolt	M6x60 DIN931-A2-2 s/s		
24	9.2018.0047.0	1	Y-piece			

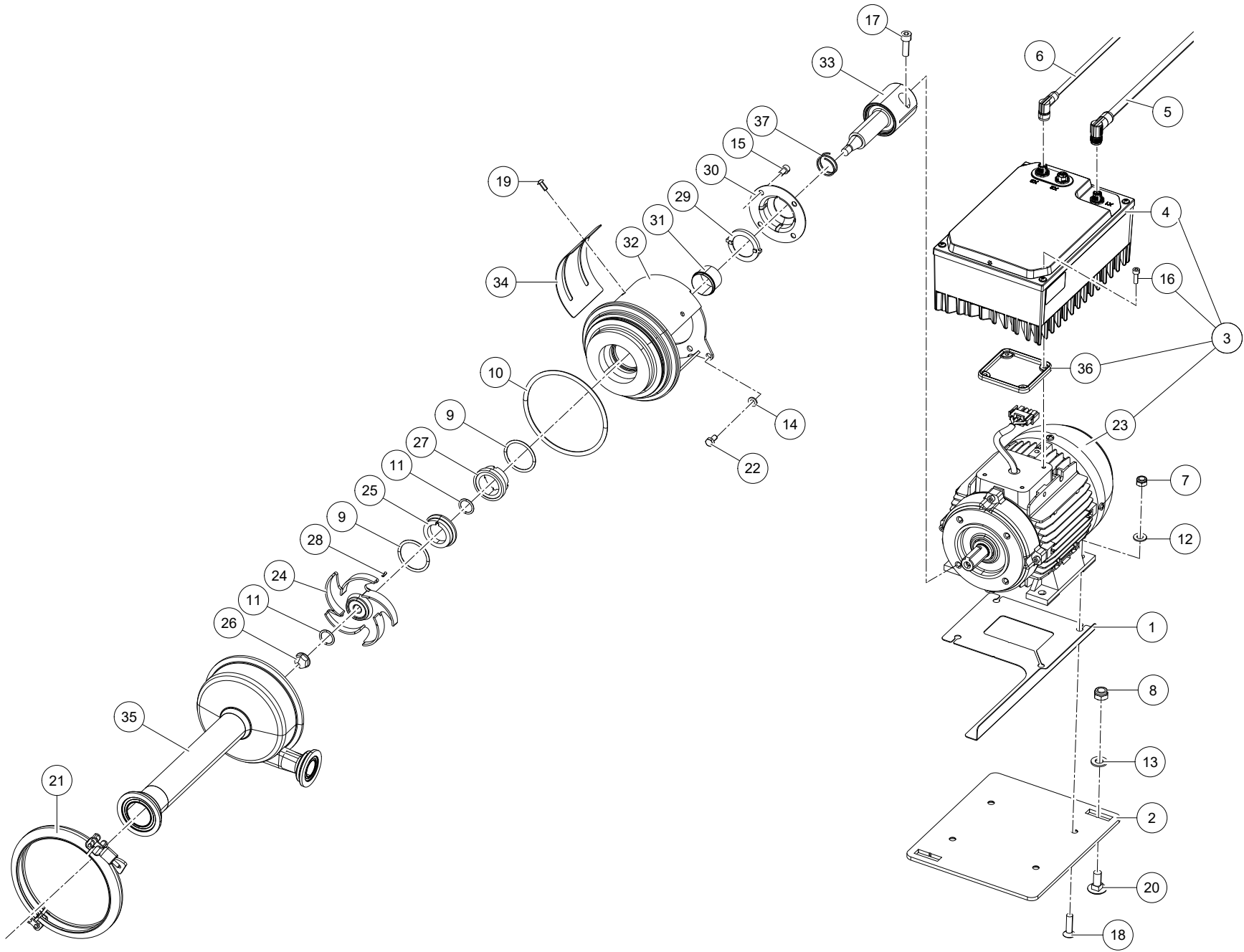




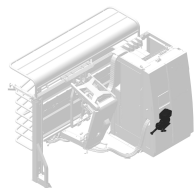
Lely Astronaut A5      Milk Transport      5.1X05.00XX-X      0003242094

Ref.	Part No	Qty.	Description	Techn. info	Criticality	Remark
1	5.1003.1159.0	1	Locking cap			
2	5.1004.1615.0	1	Nipple			
3	5.1004.2959.0	1	Plate			
4	9.1138.0351.4	2	Hose	TUBE 6x1 L= 52		
5	9.1138.0270.0	1	Tube	PUN-H DUO 6mm L = 2450		
6	9.1065.0074.2	1	Hose	EXTERNAL SAMPLING		
7	9.1030.0021.5	2	Nut	M6 DIN985-A2-2 s/s		
8	9.1030.0033.3	1	Nut	M4 DIN985-A2-2 s/s		
9	9.1057.0103.4	1	S.h. bolt	M6x35 DIN912-A2 s/s		
10	9.1057.0122.2	1	S.h. bolt	M4x30 DIN912-A2 s/s		
11	9.1073.0020.3	1	Spacer	4.2x8x20		
12	9.1138.0069.3	1	Coupling	(F) Shuttle		
13	9.1138.0098.4	1	Plug-in coupling	6-6mm (I_)		
14	9.1138.0189.4	1	Pressure reducer	6-6mm		
15	9.1138.0303.5	1	Plug-in coupling			
16	9.1138.1409.0	1	Cylinder	SAMPLER		









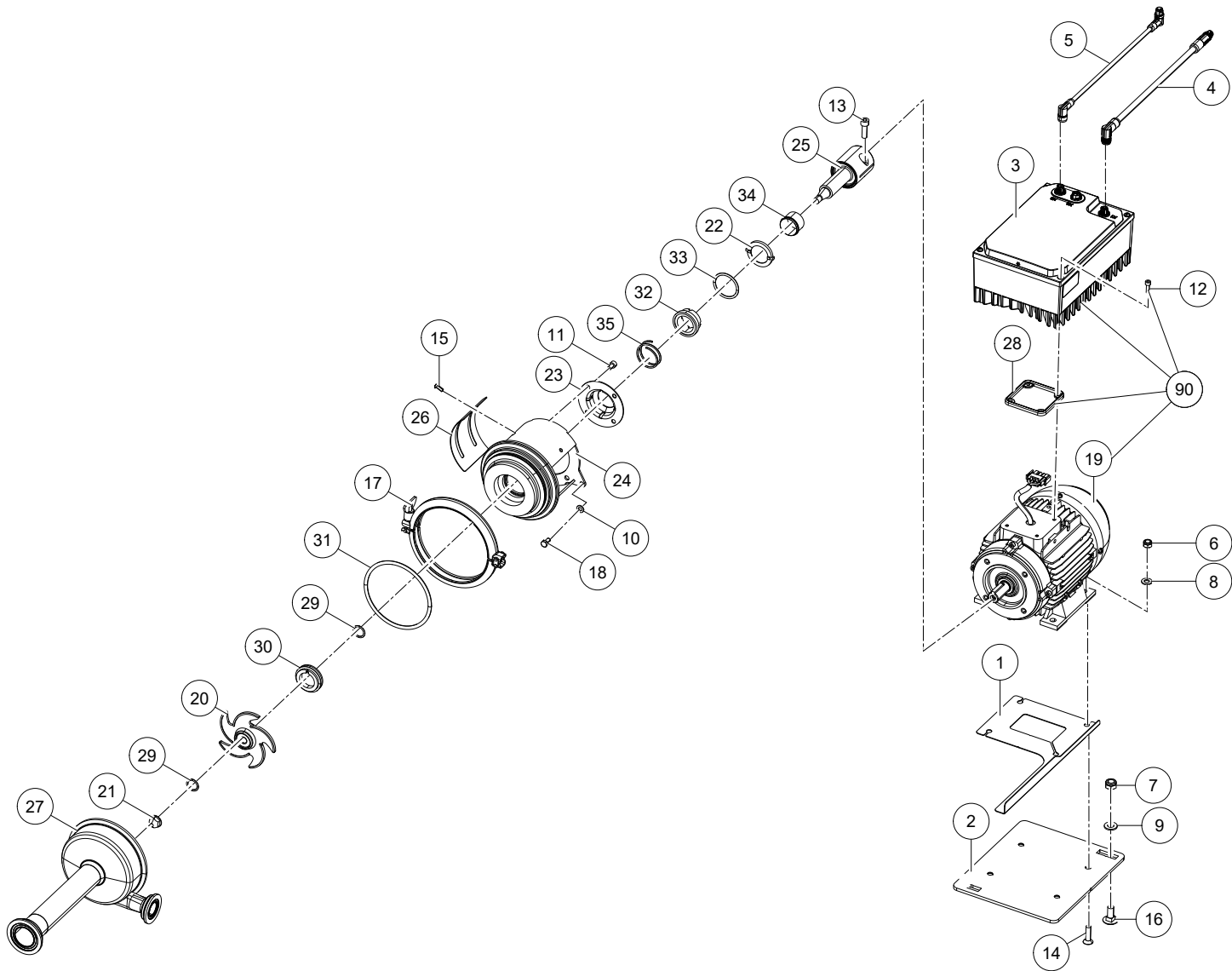
Lely Astronaut A5

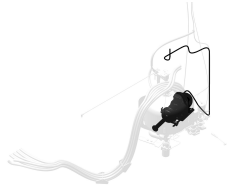
Milk Transport

5.1X05.00XX-X

0003242094

Ref.	Part No	Qty.	Description	Techn. info	Criticality	Remark
1	#####	1	Not separately			
2	#####	1	Not separately			
3	5.1005.3416.0	1	Drive			
4	#####	1	Not separately			
5	6.2001.1025.0	1	Cable	SAC-4P-MSS/2.3-PUR/FRS PE SCO		
6	6.2001.1042.0	1	Cable			
7	9.1030.0020.4	4	Nut	M8 DIN985-A2-2 s/s		
8	9.1030.0022.6	2	Nut	M10 DIN985-A2-2 s/s		
9	9.1043.0077.6	2	O-ring	21.82x3.53		
10	9.1043.0080.2	1	O-ring	123.19x3.55		
11	9.1043.0081.3	2	O-ring	10x2		
12	9.1048.0050.2	4	Washer	A8.4 DIN125-A2 s/s		
13	9.1048.0051.3	2	Washer	A10.5 DIN125-A2 s/s		
14	9.1048.0090.0	4	Washer	A6.4 DIN125-A2 s/s		
15	9.1057.0057.0	4	S.h. bolt	M6x10 DIN912-A2-2 s/s		
16	9.1057.0066.2	4	S.h. bolt	M5x16 DIN912-A2 s/s		
17	9.1057.0089.4	1	S.h. bolt	M8x25 DIN912-12.9		
18	9.1057.0357.0	4	Screw	M8x30 DIN7991-A2-70 s/s		
19	9.1057.0402.2	2	Button head screw	M5x12 ISO7380-A2 s/s		
20	9.1058.0083.4	2	Coach bolt	M10x25 DIN603 s/s		
21	9.1066.0053.1	1	Tri clamp			
22	9.1113.0488.1	4	Bolt	M6x12 DIN933-A2-2 s/s		
23	#####	1	Not separately			
24	9.1185.0225.5	1	Rotor			
25	9.1185.0226.6	1	Mechanical seal			
26	9.1185.0228.1	1	Cap nut			
27	#####	1	Not separately			
28	#####	1	Not separately			
29	9.1185.0254.6	1	Junk ring			
30	9.1185.0255.0	1	Packing support			
31	9.1185.0257.2	1	Tube			
32	9.1185.1126.0	1	Adapter			
33	9.1185.1127.0	1	Shaft			
34	9.1185.1128.0	2	Plate			
35	9.1185.1129.0	1	Housing			
36	9.1189.0294.0	1	Gasket	For WEG MW500		
37	#####	1	Not separately			





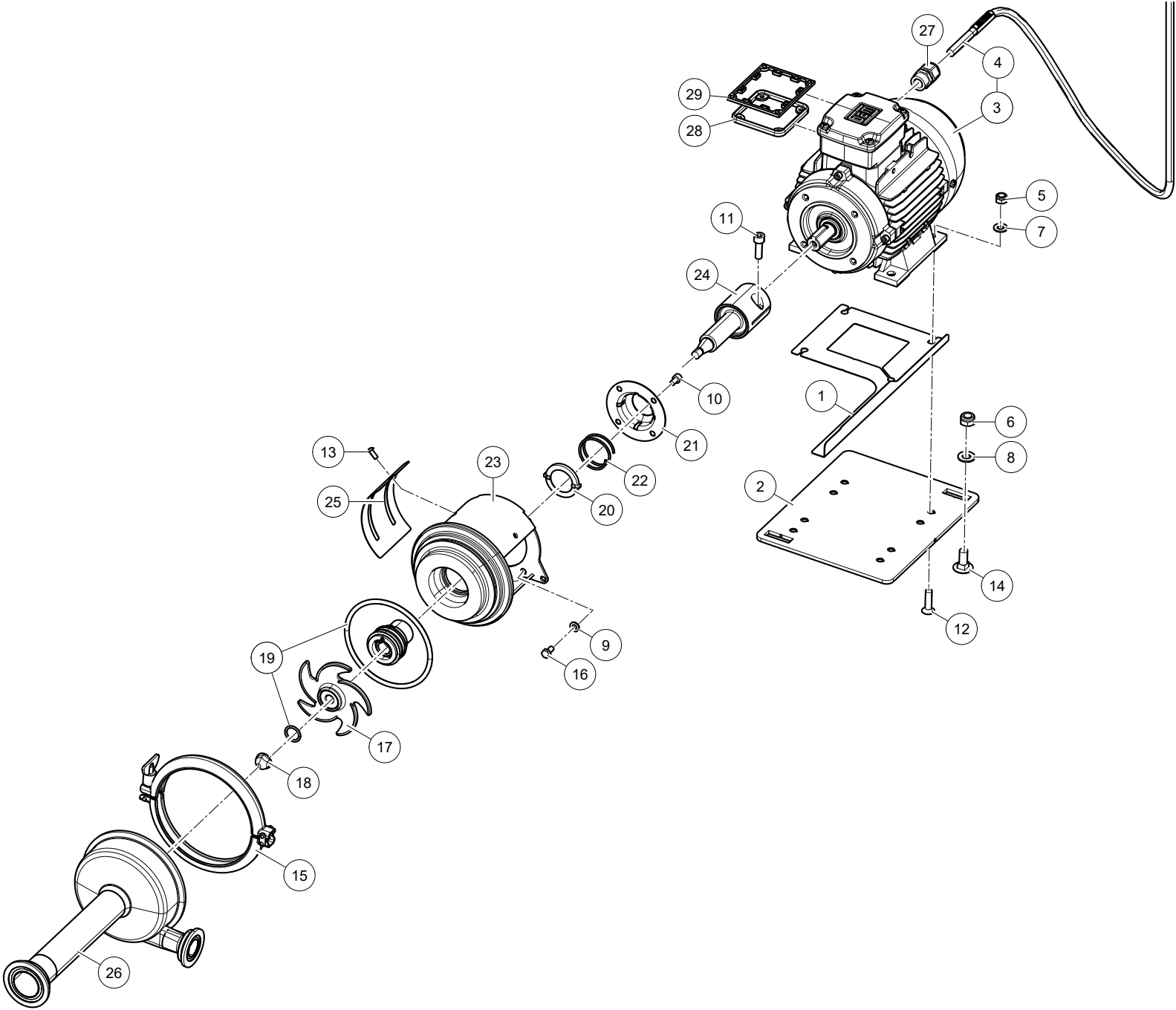
Lely Astronaut A5

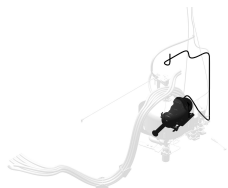
Milk Transport

5.1X05.00XX-X

0003242094

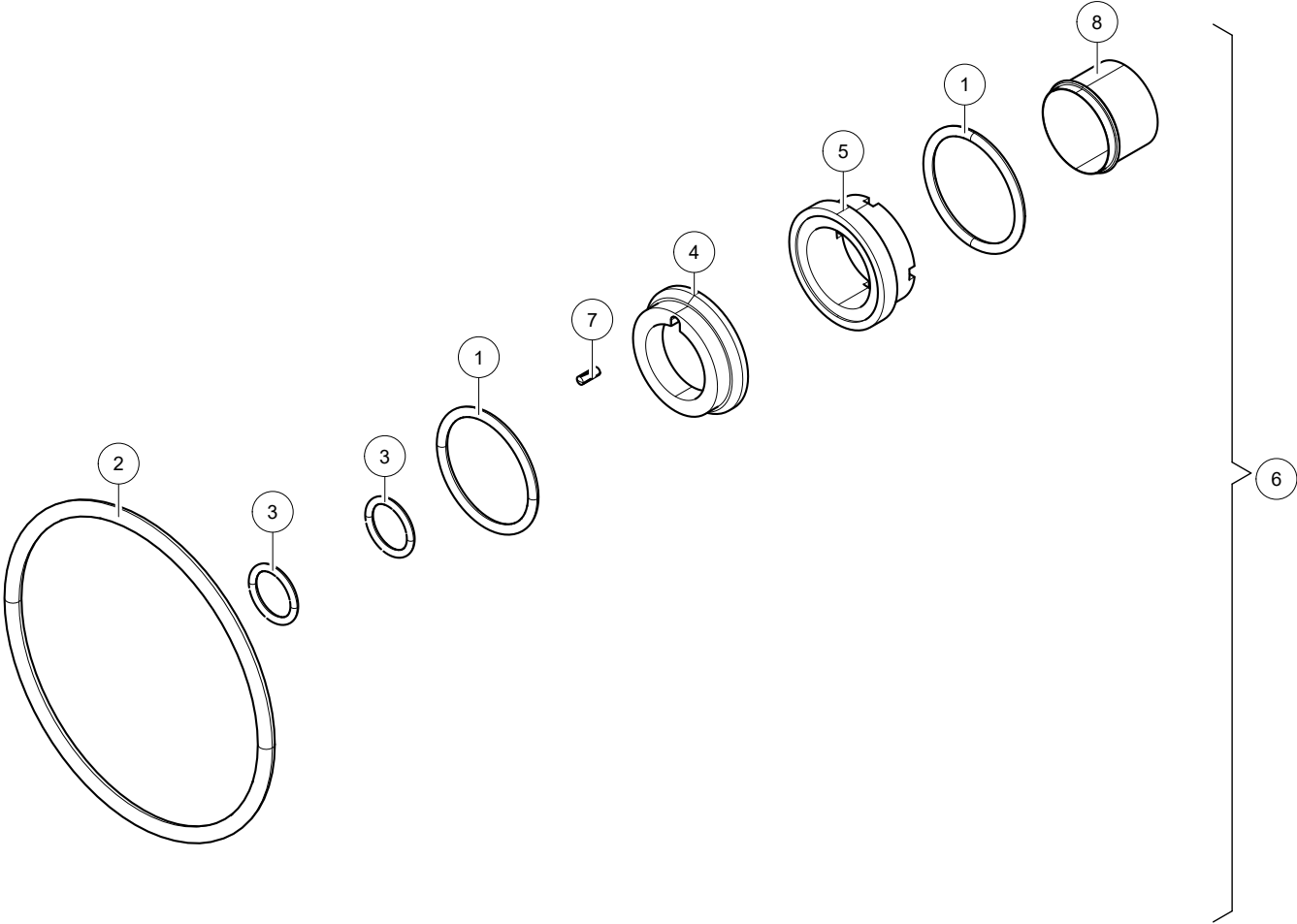
Ref.	Part No	Qty.	Description	Techn. info	Criticality	Remark
1	#####	1	Not separately			
2	#####	1	Not separately			
3	#####	1	Not separately			
4	6.2001.1025.0	1	Cable	SAC-4P-MSS/2.3-PUR/FRS PE SCO		
5	6.2001.1042.0	1	Cable			
6	9.1030.0020.4	4	Nut	M8 DIN985-A2-2 s/s		
7	9.1030.0022.6	2	Nut	M10 DIN985-A2-2 s/s		
8	9.1048.0050.2	4	Washer	A8.4 DIN125-A2 s/s		
9	9.1048.0051.3	2	Washer	A10.5 DIN125-A2 s/s		
10	9.1048.0090.0	4	Washer	A6.4 DIN125-A2 s/s		
11	9.1057.0057.0	4	S.h. bolt	M6x10 DIN912-A2-2 s/s		
12	9.1057.0066.2	4	S.h. bolt	M5x16 DIN912-A2 s/s		
13	9.1057.0089.4	1	S.h. bolt	M8x25 DIN912-12.9		
14	9.1057.0357.0	4	Screw	M8x30 DIN7991-A2-70 s/s		
15	9.1057.0402.2	2	Button head screw	M5x12 ISO7380-A2 s/s		
16	9.1058.0083.4	2	Coach bolt	M10x25 DIN603 s/s		
17	9.1066.0053.1	1	Tri clamp			
18	9.1113.0488.1	4	Bolt	M6x12 DIN933-A2-2 s/s		
19	#####	1	Not separately			
20	9.1185.0225.5	1	Rotor			
21	9.1185.0228.1	1	Cap nut			
22	9.1185.0254.6	1	Junk ring			
23	9.1185.0255.0	1	Packing support			
24	9.1185.1126.0	1	Adapter			
25	9.1185.1127.0	1	Shaft			
26	9.1185.1128.0	2	Plate			
27	9.1185.1150.0	1	Housing			
28	9.1189.0294.0	1	Gasket	For WEG MW500		
29	9.1043.0081.3	2	O-ring	10x2		
30	9.1185.0226.6	1	Mechanical seal			
31	9.1043.0080.2	1	O-ring	123.19x3.55		
32	#####	1	Not separately			
33	9.1043.0077.6	2	O-ring	21.82x3.53		
34	9.1185.0257.2	1	Tube			
35	#####	1	Not separately			
90	5.1005.3416.0	1	Drive			





Lely Astronaut A5      Milk Transport      5.1X05.00XX-X      0003293341

Ref.	Part No	Qty.	Description	Techn. info	Criticality	Remark
1	#####	1	Not separately			
2	#####	1	Not separately			
3	5.1005.5473.0	1	Motor	With Cable for P2		
4	5.1005.5571.0	1	Cable	Milkpump Power		
5	9.1030.0020.4	4	Nut	M8 DIN985-A2-2 s/s		
6	9.1030.0022.6	2	Nut	M10 DIN985-A2-2 s/s		
7	9.1048.0050.2	4	Washer	A8.4 DIN125-A2 s/s		
8	9.1048.0051.3	2	Washer	A10.5 DIN125-A2 s/s		
9	9.1048.0090.0	4	Washer	A6.4 DIN125-A2 s/s		
10	9.1057.0057.0	4	S.h. bolt	M6x10 DIN912-A2-2 s/s		
11	9.1057.0089.4	1	S.h. bolt	M8x25 DIN912-12.9		
12	9.1057.0357.0	4	Screw	M8x30 DIN7991-A2-70 s/s		
13	9.1057.0402.2	2	Button head screw	M5x12 ISO7380-A2 s/s		
14	9.1058.0083.4	2	Coach bolt	M10x25 DIN603 s/s		
15	9.1066.0053.1	1	Tri clamp			
16	9.1113.0488.1	4	Bolt	M6x12 DIN933-A2-2 s/s		
17	9.1185.0225.5	1	Rotor			
18	9.1185.0228.1	1	Cap nut			
19	9.1185.0249.1	1	Seal kit			(see page 18)
20	9.1185.0254.6	1	Junk ring			
21	9.1185.0255.0	1	Packing support			
22	9.1185.0256.1	1	Spring			
23	9.1185.1126.0	1	Adapter			
24	9.1185.1127.0	1	Shaft			
25	9.1185.1128.0	2	Plate			
26	9.1185.1150.0	1	Housing			
27	9.1186.0535.6	1	Swivel	M20x1.5 brass		
28	9.1189.0294.0	1	Gasket	For WEG MW500		
29	9.1189.0331.0	1	Seal	WEG W21 Motor		

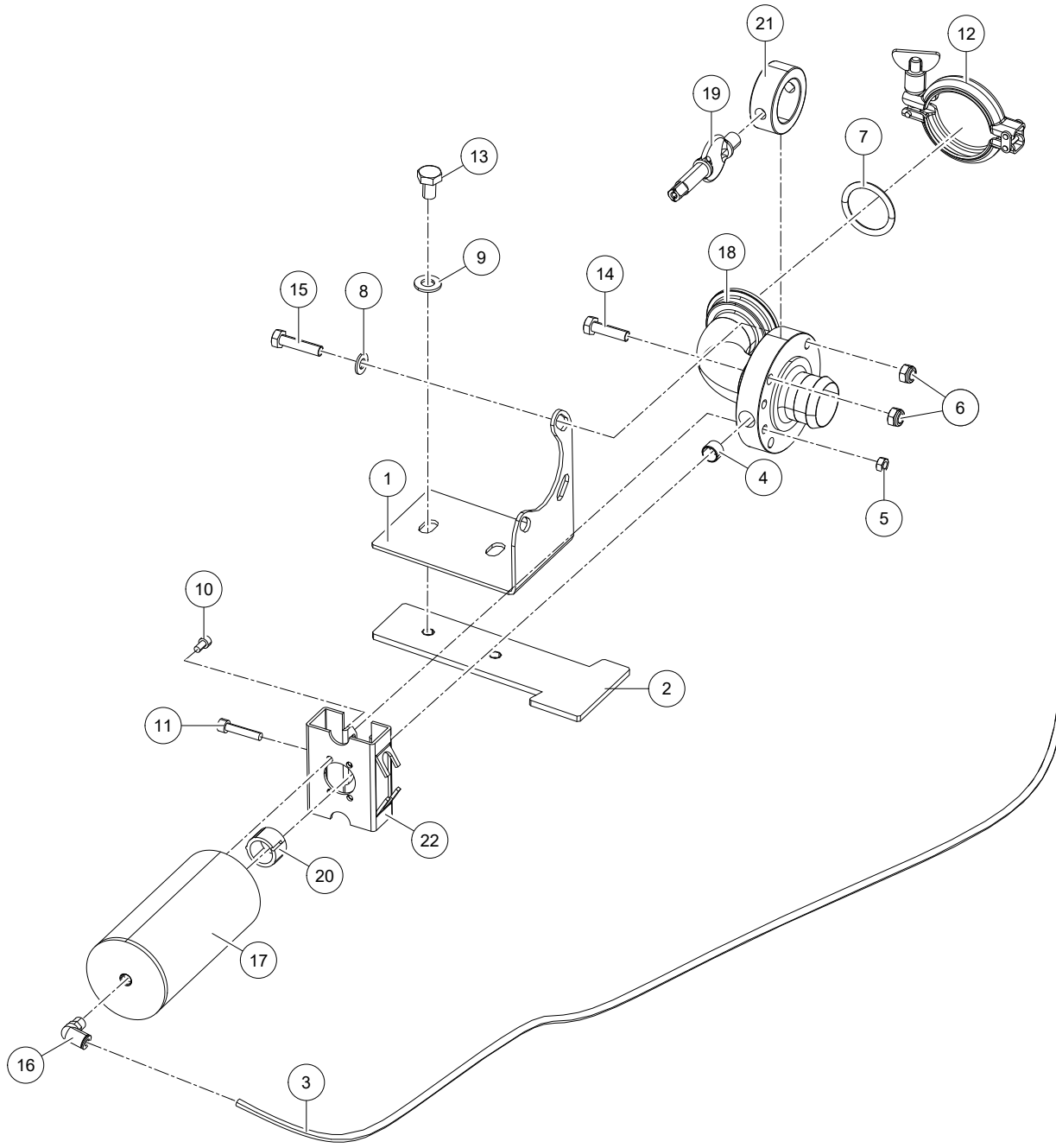




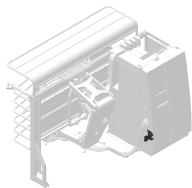
Lely Astronaut A5      Milk Transport      5.1X05.00XX-X      0003242094

Ref.	Part No	Qty.	Description	Techn. info	Criticality	Remark
1	9.1043.0077.6	2	O-ring	21.82x3.53		
2	9.1043.0080.2	1	O-ring	123.19x3.55		
3	9.1043.0081.3	2	O-ring	10x2		
4	9.1185.0226.6	1	Mechanical seal			
5	#####	1	Not separately			
6	9.1185.0249.1	1	Seal kit			
7	#####	1	Not separately			
8	9.1185.0257.2	1	Tube			





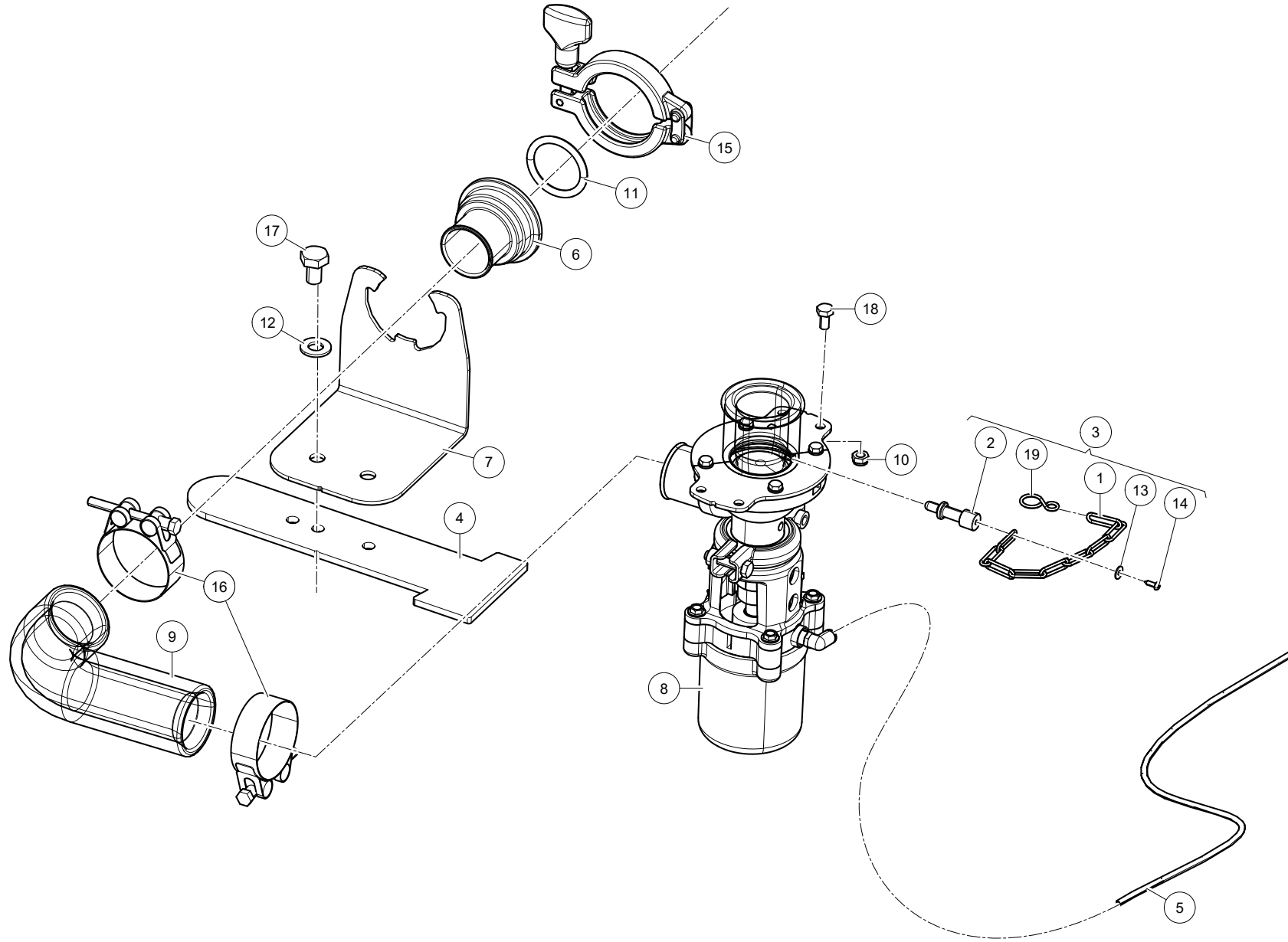


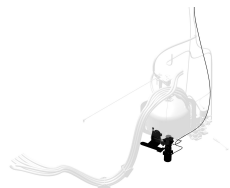


Lely Astronaut A5      Milk Transport      5.1X05.00XX-X      0003242094

Ref.	Part No		Qty.	Description	Techn. info	Criticality	Remark
1	5.1005.2626.0	[R]	1	Bracket			
	5.1105.2626.0	[L]	~	Bracket			
2	5.1005.2627.0		1	Plate			
3	9.1138.0062.3		1	Tube	4mm PA BLACK		
4	9.1022.0124.0		2	Slide bearing			
5	9.1029.0026.4		2	Nut	M6 DIN934-A2-2 s/s		
6	9.1030.0020.4		4	Nut	M8 DIN985-A2-2 s/s		
7	9.1043.0297.0		1	O-ring	37.0x5.0 DIN11864A		
8	9.1048.0050.2		3	Washer	A8.4 DIN125-A2 s/s		
9	9.1048.0051.3		2	Washer	A10.5 DIN125-A2 s/s		
10	9.1057.0053.3		4	S.h. bolt	M5x10 DIN912 s/s		
11	9.1057.0153.5		2	Screw	M6x30 DIN912 s/s		
12	9.1066.0041.3		1	Tri clamp	2"		
13	9.1113.0291.3		2	Bolt	M10x16 DIN933-A2-2 s/s		
14	9.1113.0340.2		1	Bolt	M8x30 DIN933-A2-2 s/s		
15	9.1113.0575.0		3	Bolt	M8x35 DIN933-A2-2 s/s		
16	9.1138.0049.4		1	Plug-in coupling	1/8"x6mm (┐)		
17	9.1138.1158.0		1	Actuator	PAMS-0		
18	#####		1	Not separately			
19	9.1185.1132.0		1	Valve			
20	9.1185.1133.0		1	Adapter			
21	9.1185.1134.0		1	Gasket			
22	9.1185.1135.0		1	Bracket			







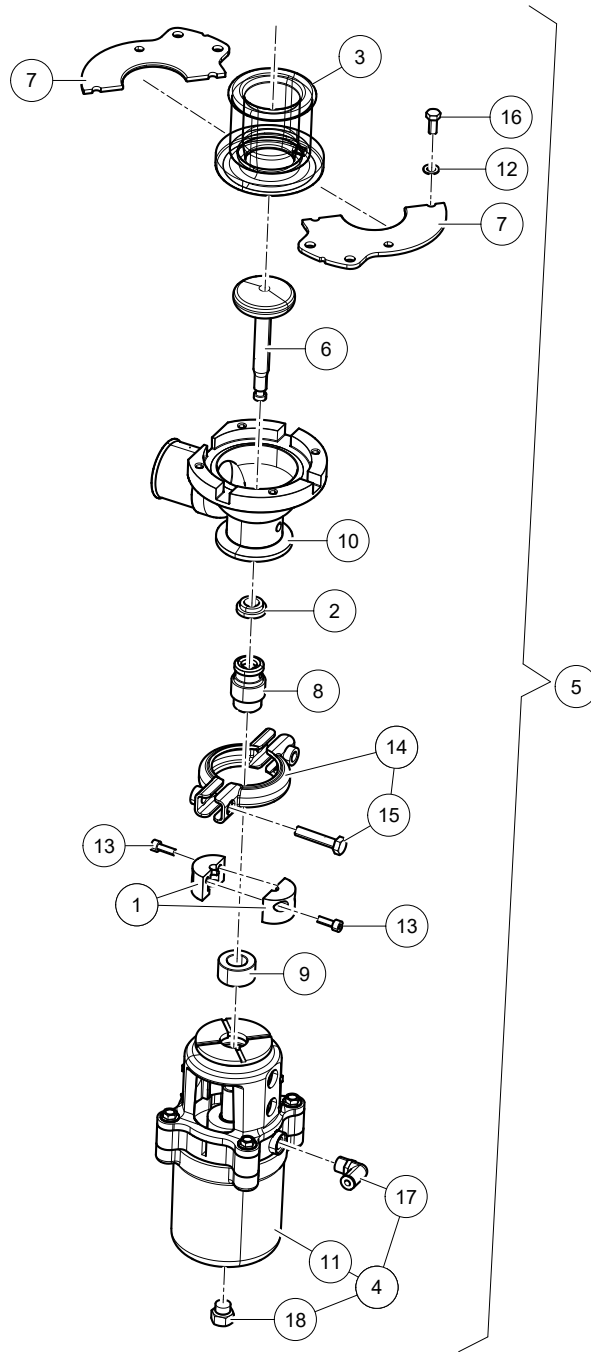
Lely Astronaut A5

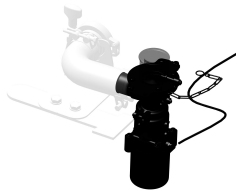
Milk Transport

5.1X05.00XX-X

0003242094

Ref.	Part No	Qty.	Description	Techn. info	Criticality	Remark
1	9.1144.0072.0	1	Chain	Length = 9 links (approx. 200mm)		
2	5.1005.2477.0	1	Plug			
3	5.1005.2574.0	1	Plug with chain			
4	5.1005.2627.0	1	Plate			
5	9.1138.0062.3	1	Tube	4mm PA BLACK		
6	#####	1	Not separately			
7	#####	1	Not separately			
8	5.1005.4067.0	1	Valve	Milk jar		(see page 24)
9	5.1005.5308.0	1	Tube			
10	9.1030.0021.5	2	Nut	M6 DIN985-A2-2 s/s		
11	9.1043.0297.0	1	O-ring	37.0x5.0 DIN11864A		
12	9.1048.0051.3	1	Washer	A10.5 DIN125-A2 s/s		
13	9.1048.0125.0	1	Washer	A 3.2 DIN9021-A2 s/s		
14	9.1064.0106.0	1	Plate screw	2.9x9.5 DIN7981 s/s		
15	9.1066.0041.3	1	Tri clamp	2"		
16	#####	2	Not separately			
17	9.1113.0291.3	1	Bolt	M10x16 DIN933-A2-2 s/s		
18	9.1113.0488.1	2	Bolt	M6x12 DIN933-A2-2 s/s		
19	9.1147.0009.2	1	S-hook			



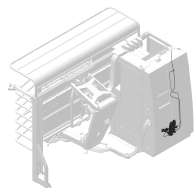


Lely Astronaut A5      Milk Transport      5.1X05.00XX-X      0003242094

Ref.	Part No	Qty.	Description	Techn. info	Criticality	Remark
1	5.1003.0574.0	2	Clamping piece			
2	5.1005.3324.0	1	Scraper			
3	5.1005.3351.0	1	Cuff			
4	5.1005.3701.0	1	Actuator			
5	5.1005.4067.0	1	Valve	Milk jar		
6	5.1005.4071.0	1	Plunger			
7	#####	2	Not separately			
8	5.1005.4073.0	1	Bushing			
9	5.1005.4074.0	1	Stop			
10	5.1005.4085.0	1	Housing			
11	#####	1	Not separately			
12	9.1048.0086.3	4	Washer	A5.3 DIN125-A2 s/s		
13	9.1057.0160.5	2	Screw	M4x12 DIN912 s/s		
14	9.1066.0070.4	1	Tri clamp	NW25-40		
15	9.1057.0519.0	2	Socket head screw	M6x25 DIN912-A4 S/S TUFLOK		
16	9.1113.0213.2	4	Bolt	M5x12 DIN933-A2-2 s/s		
17	9.1138.0089.2	1	Plug-in coupling	1/8"x4mm ( L )		
18	9.1138.1084.0	1	Filter	1/8" BSP Silencer ( st.st), AISI 302		







Lely Astronaut A5

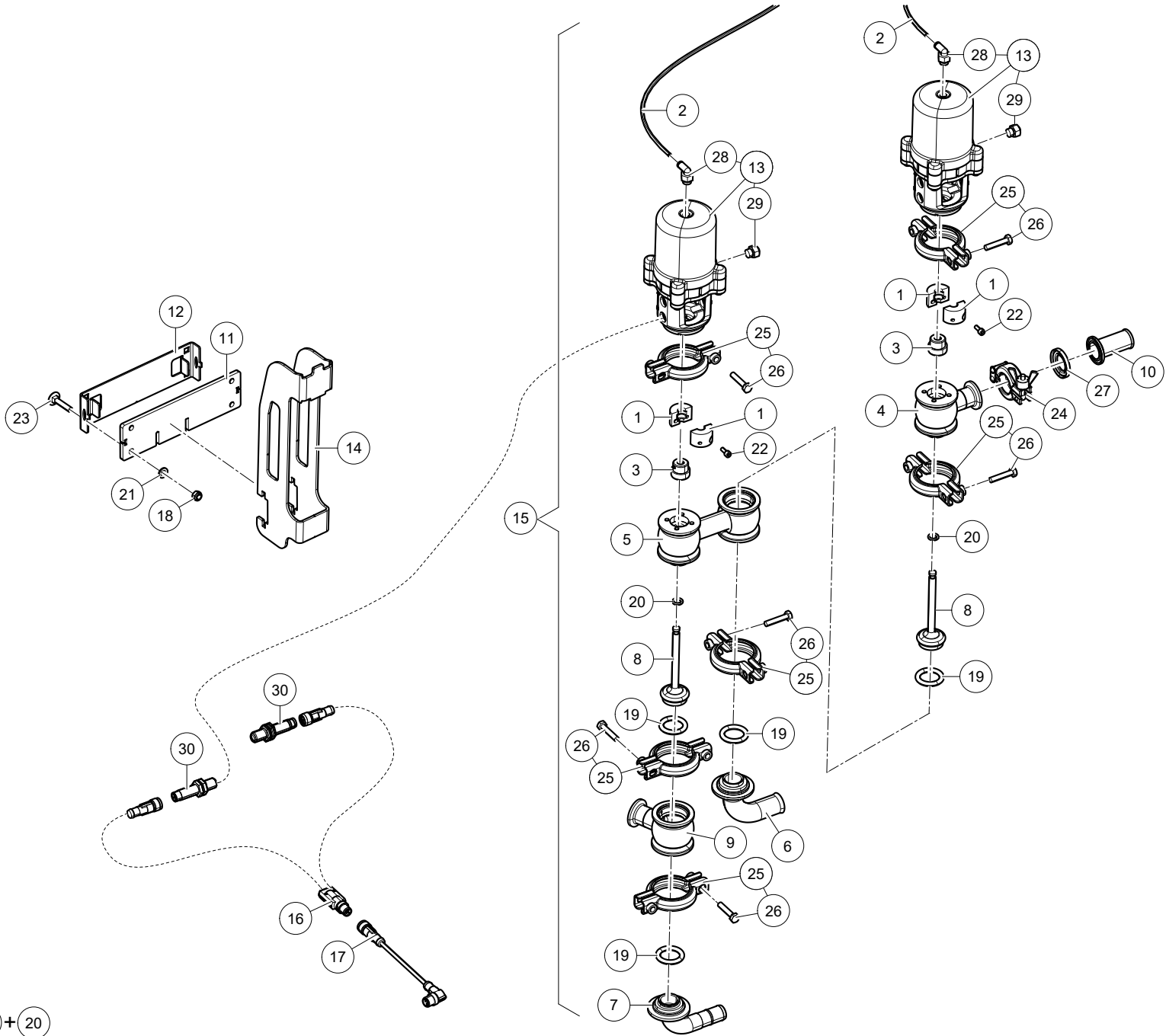
Milk Transport

5.1X05.00XX-X

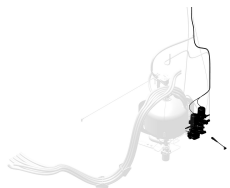
0003242094

Ref.	Part No	Qty.	Description	Techn. info	Criticality	Remark
1	5.1003.0574.0	4	Clamping piece			
2	9.1138.0062.3	1	Tube	Black PA 4mm L=3000mm		
3	5.1003.7003.0	2	Guide			
4	5.1003.7006.0	2	Bracket			
5	#####	2	Not separately			
6	5.1003.7010.0	1	Valve housing (half)			
7	5.1003.7020.0	1	Valve housing (half)			
8	5.1003.7030.0	1	Valve housing (half)			
9	5.1003.7040.0	1	Valve housing (half)			
10	5.1003.7340.0	2	Plunger			
11	#####	2	Not separately			
12	#####	2	Not separately			
13	5.1003.7530.0	1	Valve housing			
14	5.1004.5852.0	1	Nipple			
15	#####	1	Not separately			
16	5.1005.2467.0	1	Plate			
17	#####	1	Not separately			
18	9.1030.0021.5	4	Nut	M6 DIN985-A2-2 s/s		
19	#####	2	Not separately			
20	9.1043.0141.0	4	O-ring	23.16x5.33 EPDM		
21	9.1043.0227.0	2	O-ring	7.78x2.55		
22	9.1043.0265.0	4	O-ring	12.37 x 2.62 NBR 70\°r° SHORE A NT70.11 A+P 11.2003.1482		
23	9.1048.0090.0	4	Washer	A6.4 DIN125-A2 s/s		
24	9.1057.0072.1	4	S.h. bolt	M4x10 DIN912-A2 s/s		
25	9.1058.0087.0	4	Coach bolt	M6x30 DIN603-A2-70 s/s		
26	9.1066.0002*6	1	Hose clamp	ø60-ø82		
27	9.1066.0065.6	1	Tri clamp	NW 10/20		
28	9.1066.0070.4	4	Tri clamp	NW25-40		
29	9.1057.0519.0	8	Socket head screw	M6x25 DIN912-A4 S/S TUFLOK		
30	9.1113.0482.2	12	Bolt	M5x8 DIN933-A2-2 s/s		
31	9.1130.0028.3	1	Tri clamp			
32	9.1138.0089.2	2	Plug-in coupling	1/8"x4mm (┘)		
90	5.1005.5434.0	1	Set	3-way valve o-ring set		

90 = 19 + 20







Lely Astronaut A5

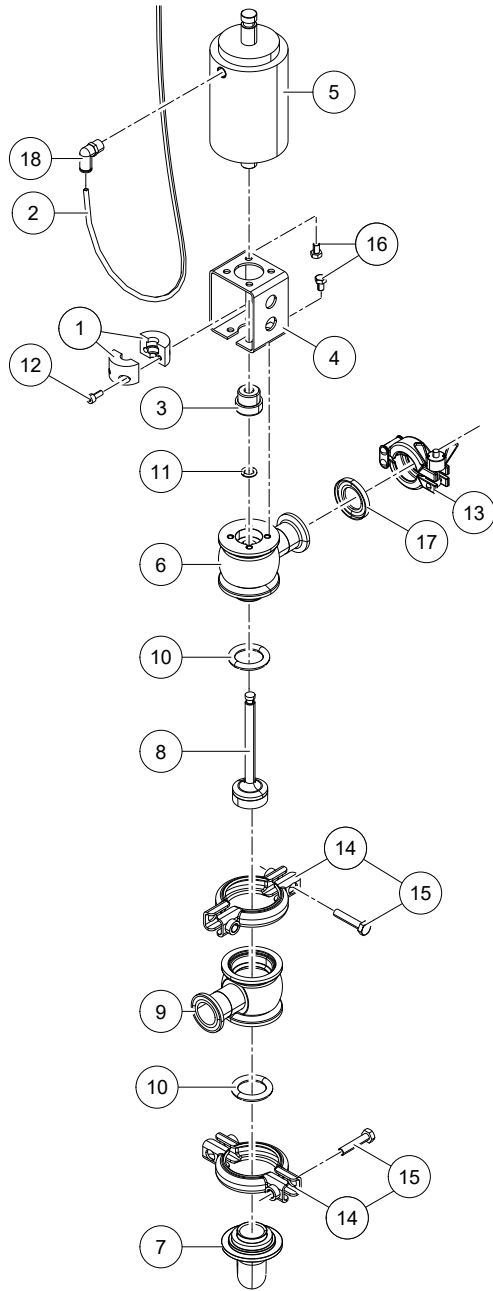
Milk Transport

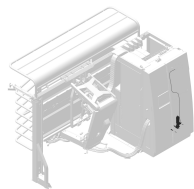
5.1X05.00XX-X

0003242094

Ref.	Part No	Qty.	Description	Techn. info	Criticality	Remark
1	5.1003.0574.0	4	Clamping piece			
2	9.1138.0062.3	2	Tube	ZWART PA 4mm L=3000mm		
3	5.1003.7003.0	2	Guide			
4	5.1003.7010.0	1	Valve housing (half)			
5	5.1003.7020.0	1	Valve housing (half)			
6	5.1003.7030.0	1	Valve housing (half)			
7	5.1003.7040.0	1	Valve housing (half)			
8	5.1003.7340.0	2	Plunger			
9	5.1003.7530.0	1	Valve housing			
10	5.1004.5852.0	1	Nipple			
11	5.1005.2467.0	1	Plate			
12	#####	1	Not separately			
13	5.1005.3700.0	2	Actuator			
14	5.1005.3857.0	1	Plate			
15	5.1005.5123.0	1	Valve 3-Way			
16	6.2001.1012.0	1	Cable			
17	6.2001.1019.0	1	Cable			
18	9.1030.0021.5	4	Nut	M6 DIN985-A2-2 s/s		
19	9.1043.0141.0	4	O-ring	23.16x5.33 EPDM		
20	9.1043.0227.0	2	O-ring	7.78x2.55		
21	9.1048.0090.0	4	Washer	A6.4 DIN125-A2 s/s		
22	9.1057.0072.1	4	S.h. bolt	M4x10 DIN912-A2 s/s		
23	9.1058.0087.0	4	Coach bolt	M6x30 DIN603-A2-70 s/s		
24	9.1066.0065.6	1	Tri clamp	NW 10/20		
25	9.1066.0070.4	6	Tri clamp	NW25-40		
26	9.1057.0519.0	12	Socket head screw	M6x25 DIN912-A4 S/S TUFLOK		
27	9.1130.0028.3	1	Tri clamp			
28	9.1138.1083.0	2	Push-pull nipple	MINI, G1/8"x 4 O-RING SEAL		
29	9.1138.1084.0	2	Filter	1/8" BSP Silencer ( st.st), AISI 302		
30	9.1183.0066.0	2	Sensor	With M12 connector		
90	5.1005.5434.0	2	Set	3-way valve o-ring set		

$$\textcircled{90} = \textcircled{10} + \textcircled{11}$$





Lely Astronaut A5

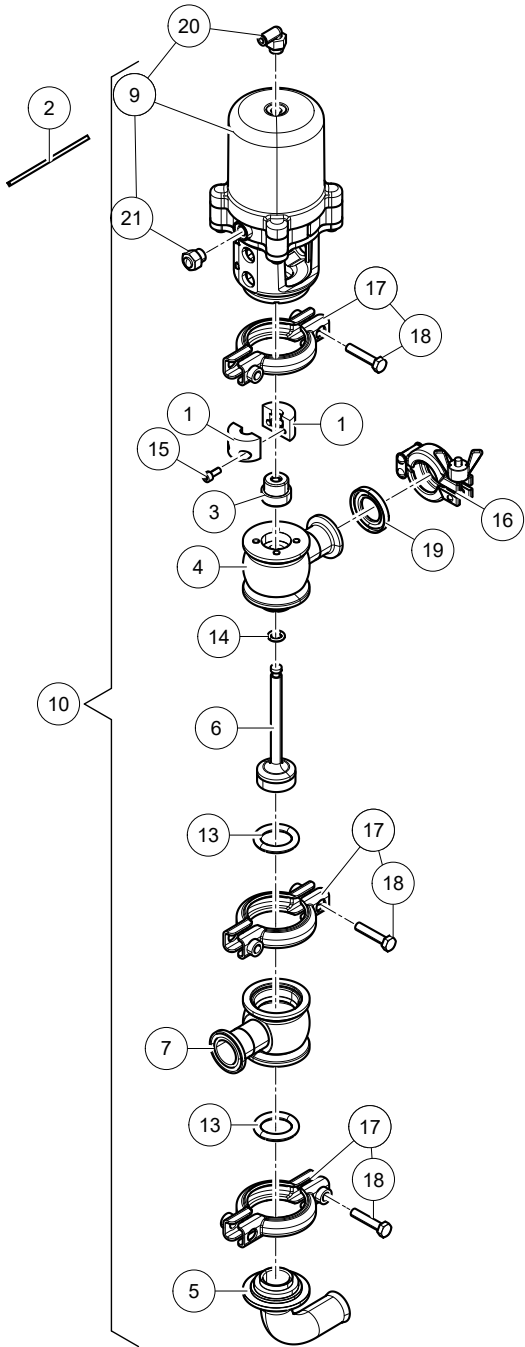
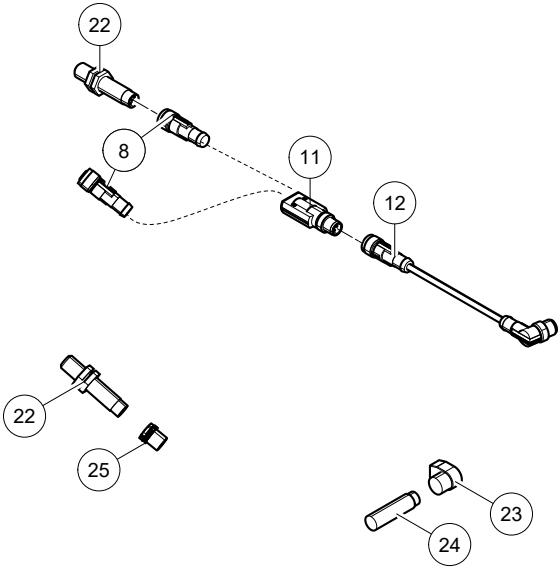
Milk Transport

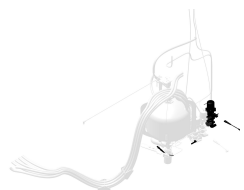
5.1X05.00XX-X

0003242094

Ref.	Part No	Qty.	Description	Techn. info	Criticality	Remark
1	5.1003.0574.0	2	Clamping piece			
2	9.1138.0062.3	1	Tube	Black PA 4mm L=3000mm		
3	5.1003.7003.0	1	Guide			
4	5.1003.7006.0	1	Bracket			
5	#####	1	Not separately			
6	5.1003.7010.0	1	Valve housing (half)			
7	5.1003.7030.0	1	Valve housing (half)			
8	5.1003.7340.0	1	Plunger			
9	5.1003.7530.0	1	Valve housing			
10	9.1043.0141.0	1	O-ring	23.16x5.33 EPDM		
11	9.1043.0227.0	1	O-ring	7.78x2.55		
12	9.1057.0072.1	2	S.h. bolt	M4x10 DIN912-A2 s/s		
13	9.1066.0065.6	1	Tri clamp	NW 10/20		
14	9.1066.0070.4	2	Tri clamp	NW25-40		
15	9.1057.0519.0	3	Socket head screw	M6x25 DIN912-A4 S/S TUFLOK		
16	9.1113.0482.2	6	Bolt	M5x8 DIN933-A2-2 s/s		
17	9.1130.0028.3	1	Tri clamp			
18	9.1138.0089.2	1	Plug-in coupling	1/8"x4mm (┘)		
90	5.1005.5434.0	1	Set	3-way valve o-ring set		

90 = 13 + 14





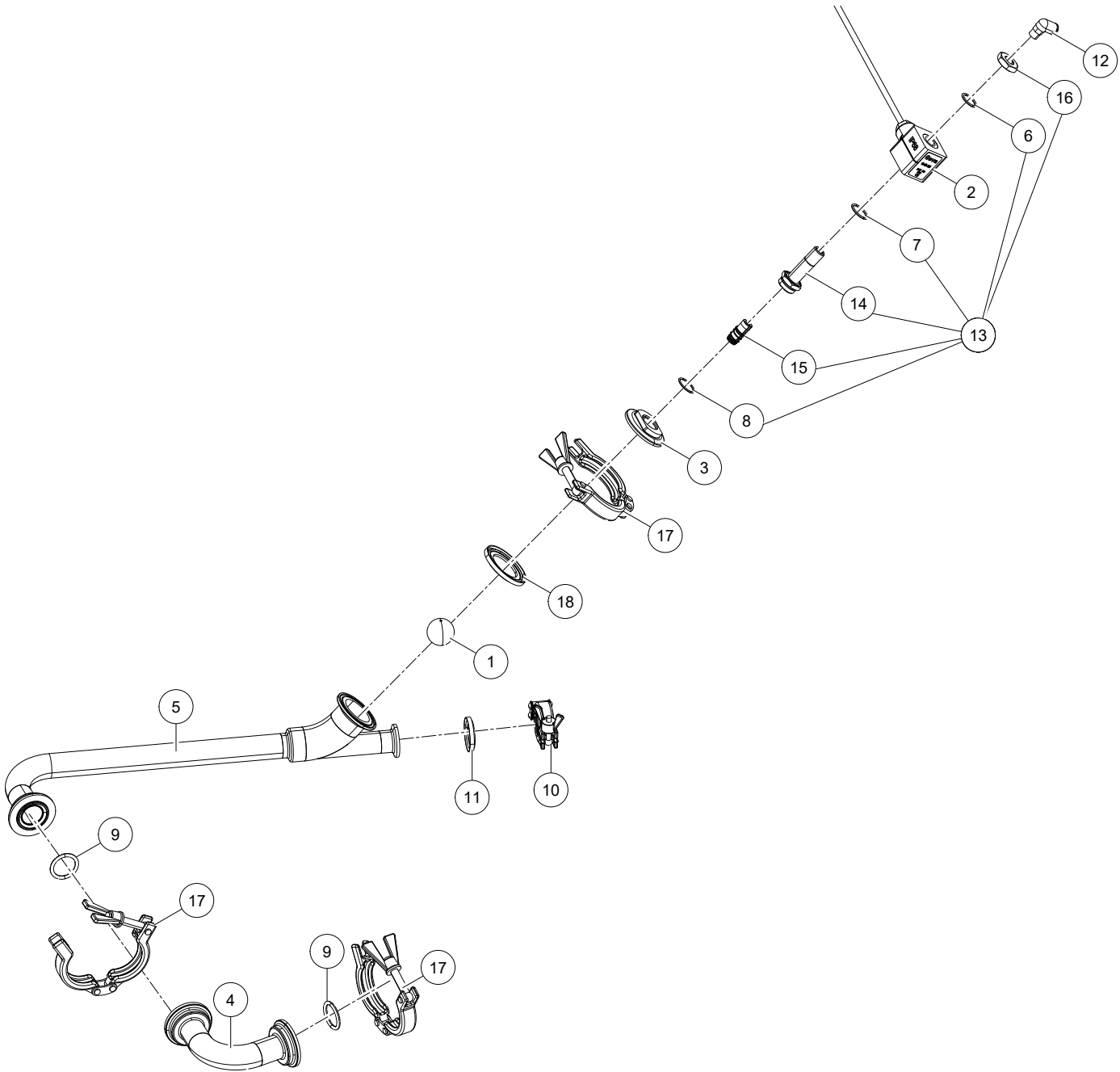
Lely Astronaut A5

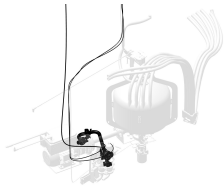
Milk Transport

5.1X05.00XX-X

0003242094

Ref.	Part No	Qty.	Description	Techn. info	Criticality	Remark
1	5.1003.0574.0	2	Clamping piece			
2	9.1138.0062.3	1	Tube	ZWART PA 4mm L=3000mm		
3	5.1003.7003.0	1	Guide			
4	5.1003.7010.0	1	Valve housing (half)			
5	5.1003.7030.0	1	Valve housing (half)			
6	5.1003.7340.0	1	Plunger			
7	5.1003.7530.0	1	Valve housing			
8	#####	1	Not separately			
9	5.1005.3700.0	1	Actuator			
10	5.1005.5182.0	1	Valve			
11	6.2001.1012.0	1	Cable			
12	6.2001.1019.0	1	Cable			
13	9.1043.0141.0	2	O-ring	23.16x5.33 EPDM		
14	9.1043.0227.0	1	O-ring	7.78x2.55		
15	9.1057.0072.1	2	S.h. bolt	M4x10 DIN912-A2 s/s		
16	9.1066.0065.6	1	Tri clamp	NW 10/20		
17	9.1066.0070.4	3	Tri clamp	NW25-40		
18	9.1057.0519.0	6	Socket head screw	M6x25 DIN912-A4 S/S TUFLOK		
19	9.1130.0028.3	1	Tri clamp			
20	9.1138.1083.0	1	Push-pull nipple	MINI, G1/8"x 4 O-RING SEAL		
21	9.1138.1084.0	1	Filter	1/8" BSP Silencer ( st.st), AISI 302		
22	9.1183.0066.0	2	Sensor	With M12 connector		
23	9.1185.0776.5	1	Plug	24VDC		
24	9.1185.0781.3	1	Switch			
25	9.1186.1059.0	1	Plug	M12 screw plug SPEEDCON		
90	5.1005.5434.0	1	Set	3-way valve o-ring set		





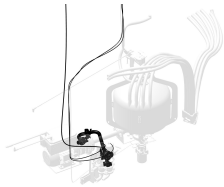
Lely Astronaut A5      Milk Transport      5.1X05.00XX-X      0003242094

Ref.	Part No	Qty.	Description	Techn. info	Criticality	Remark
1	5.1004.0920.0	1	Ball	With Cable and M12 Connector		
2	5.1005.2138.0	1	Solenoid			
3	5.1005.2460.0	1	Adapter			
4	5.1005.2568.0	1	Bend weld.pp			
5	#####	1	Not separately			
6	9.1043.0120.0	1	O-ring	1,6x7,78 Viton		
7	9.1043.0121.1	1	O-ring	17,17x1,78 Viton		
8	9.1043.0122.2	1	O-ring	18x1,5 Viton		
9	9.1043.0298.0	2	O-ring	24.0x3.5 DIN11864A SERIE C		
10	9.1066.0065.6	1	Tri clamp	NW 10/20		
11	9.1130.0028.3	1	Tri clamp			
12	9.1138.0049.4	1	Plug-in coupling	1/8"x6mm (L)		
13	9.1138.0814.4	1	Coupling			
14	9.1138.0814.4	1	Coupling			
15	9.1138.0816.6	1	Valve	2-2-2023		
16	9.1138.0817.0	1	Nut			
17	9.1185.0189.4	3	Clamp			
18	9.1185.1131.0	1	Seal			







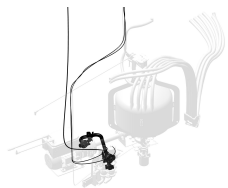


Lely Astronaut A5      Milk Transport      5.1X05.00XX-X      0003242094

Ref.	Part No	Qty.	Description	Techn. info	Criticality	Remark
1	5.1004.0920.0	1	Ball			
2	5.1005.2568.0	1	Bend weld.pp			
3	#####	1	Not separately			
4	9.1138.0064.5	1	Tube	PUN-H Blue 6mm L = 2800		
5	9.1043.0298.0	2	O-ring	24.0x3.5 DIN11864A SERIE C		
6	9.1066.0065.6	1	Tri clamp	NW 10/20		
7	9.1130.0028.3	1	Tri clamp			
8	9.1138.1243.0	1	Push-pull nipple	PL 06-G04		
9	9.1185.0189.4	4	Clamp			
10	9.1185.1131.0	1	Seal			
11	9.1189.0300.0	1	Valve	BLOW EMPTY CHECK VALVE G1/2"		
12	9.1189.0302.0	1	Kit	Blow Empty Milk Line Components		
13	#####	1	Not separately			
14	#####	1	Not separately			
15	9.1189.0305.0	1	Gasket			







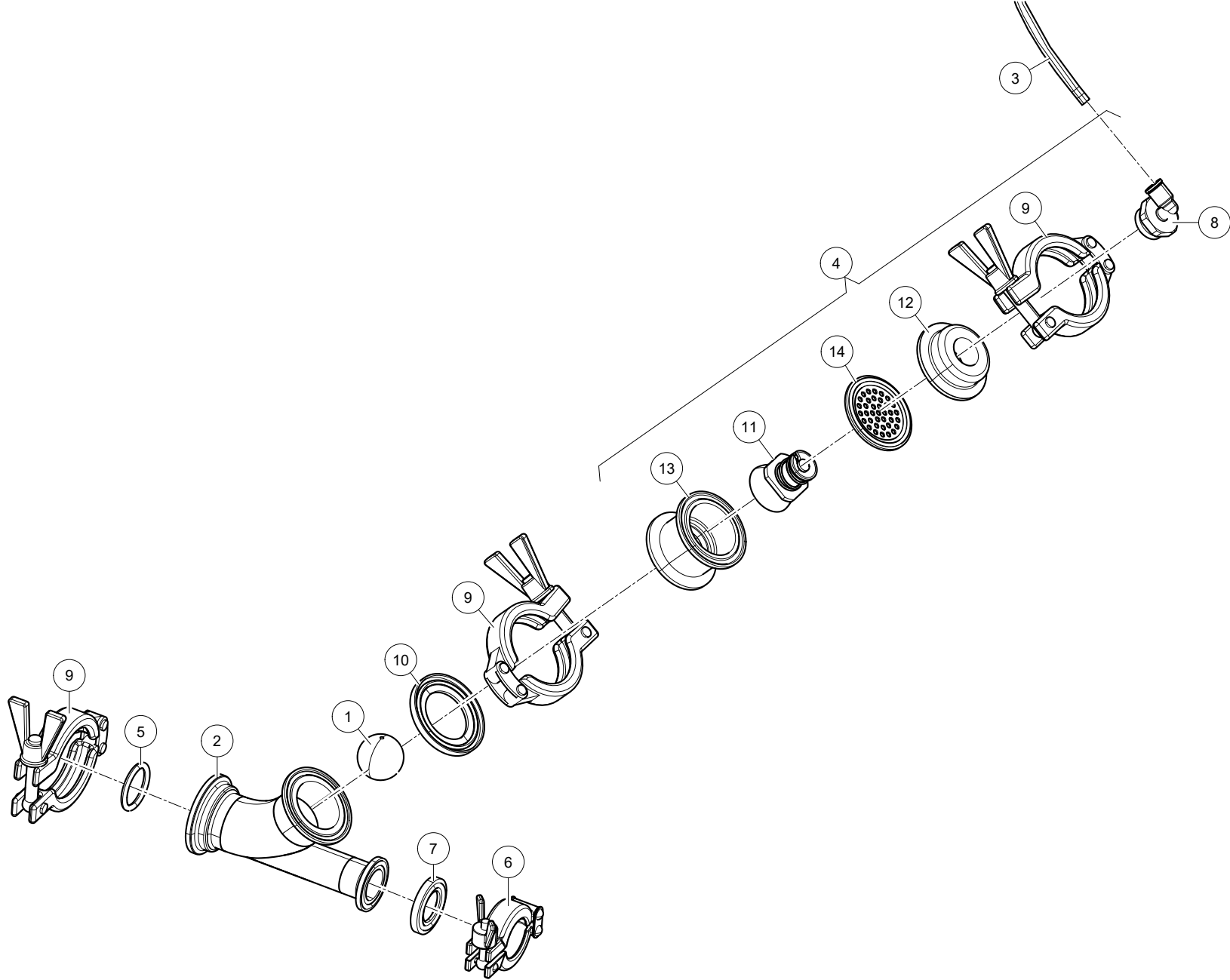
Lely Astronaut A5

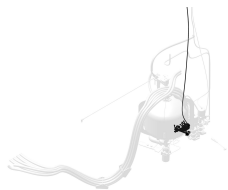
Milk Transport

5.1X05.00XX-X

0003242094

Ref.	Part No	Qty.	Description	Techn. info	Criticality	Remark
1	5.1003.0373.0	1	Valve			
2	5.1005.2568.0	1	Bend weld.pp			
3	9.1138.0064.5	1	Tube	PUN-H Blue 6mm L = 2800		
4	5.1005.3564.0	1	Unit blow empty 3-A			
5	5.1005.5385.0	1	Non-return valve	Blow Empty		
6	5.1005.5389.0	1	Non-return valve			
7	5.1005.5387.0	[R] ~	Non-return valve	Blow empty		
	5.1105.5387.0	[L] 1	Non-return valve	Blow empty		
8	9.1043.0298.0	2	O-ring	24.0x3.5 DIN11864A SERIE C		
9	9.1066.0041.3	1	Tri clamp	2"		
10	9.1130.0028.3	1	Tri clamp			
11	9.1138.1243.0	1	Push-pull nipple	PL 06-G04		
12	9.1185.0189.4	4	Clamp			
13	9.1185.1131.0	1	Seal			
14	9.1189.0300.0	1	Valve	BLOW EMPTY CHECK VALVE G1/2"		
15	9.1189.0302.0	1	Kit	Blow Empty Milk Line Components		
16	#####	1	Not separately			
17	#####	1	Not separately			
18	9.1189.0305.0	1	Gasket			





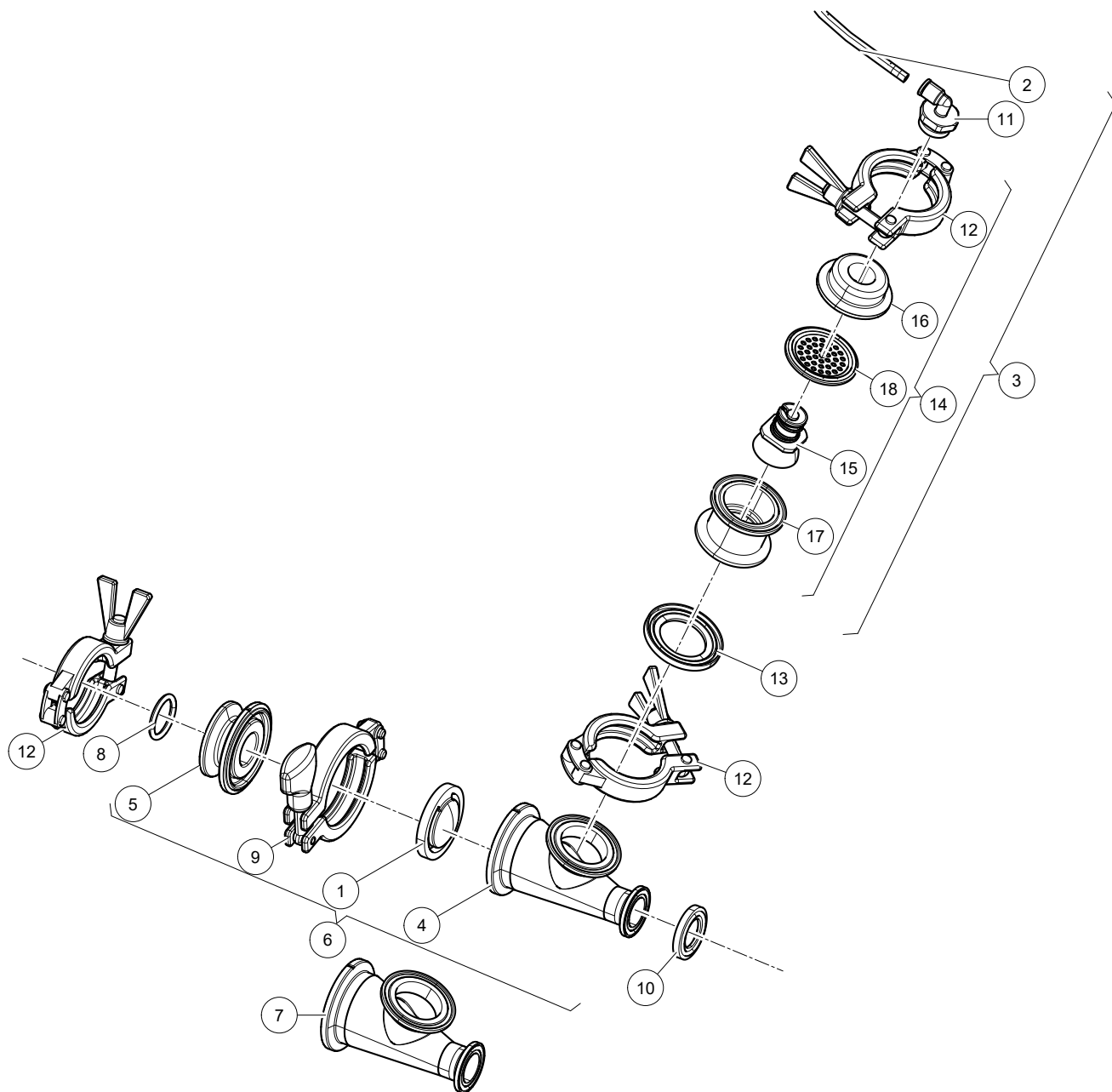
Lely Astronaut A5

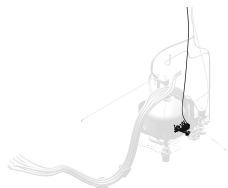
Milk Transport

5.1X05.00XX-X

0003242094

Ref.	Part No	Qty.	Description	Techn. info	Criticality	Remark
1	5.1004.0920.0	1	Ball			
2	5.1005.2461.0	1	Non-return valve weld.pp			
3	9.1138.0064.5	1	Tube	PUN-H Blue 6mm L = 2800		
4	5.1005.3564.0	1	Unit blow empty 3-A			
5	9.1043.0298.0	1	O-ring	24.0x3.5 DIN11864A SERIE C		
6	9.1066.0065.6	1	Tri clamp	NW 10/20		
7	9.1130.0028.3	1	Tri clamp			
8	9.1138.1243.0	1	Push-pull nipple	PL 06-G04		
9	9.1185.0189.4	3	Clamp			
10	9.1185.1131.0	1	Seal			
11	9.1189.0302.0	1	Kit	Blow Empty Milk Line Components		
12	#####	1	Not separately			
13	#####	1	Not separately			
14	9.1189.0305.0	1	Gasket			





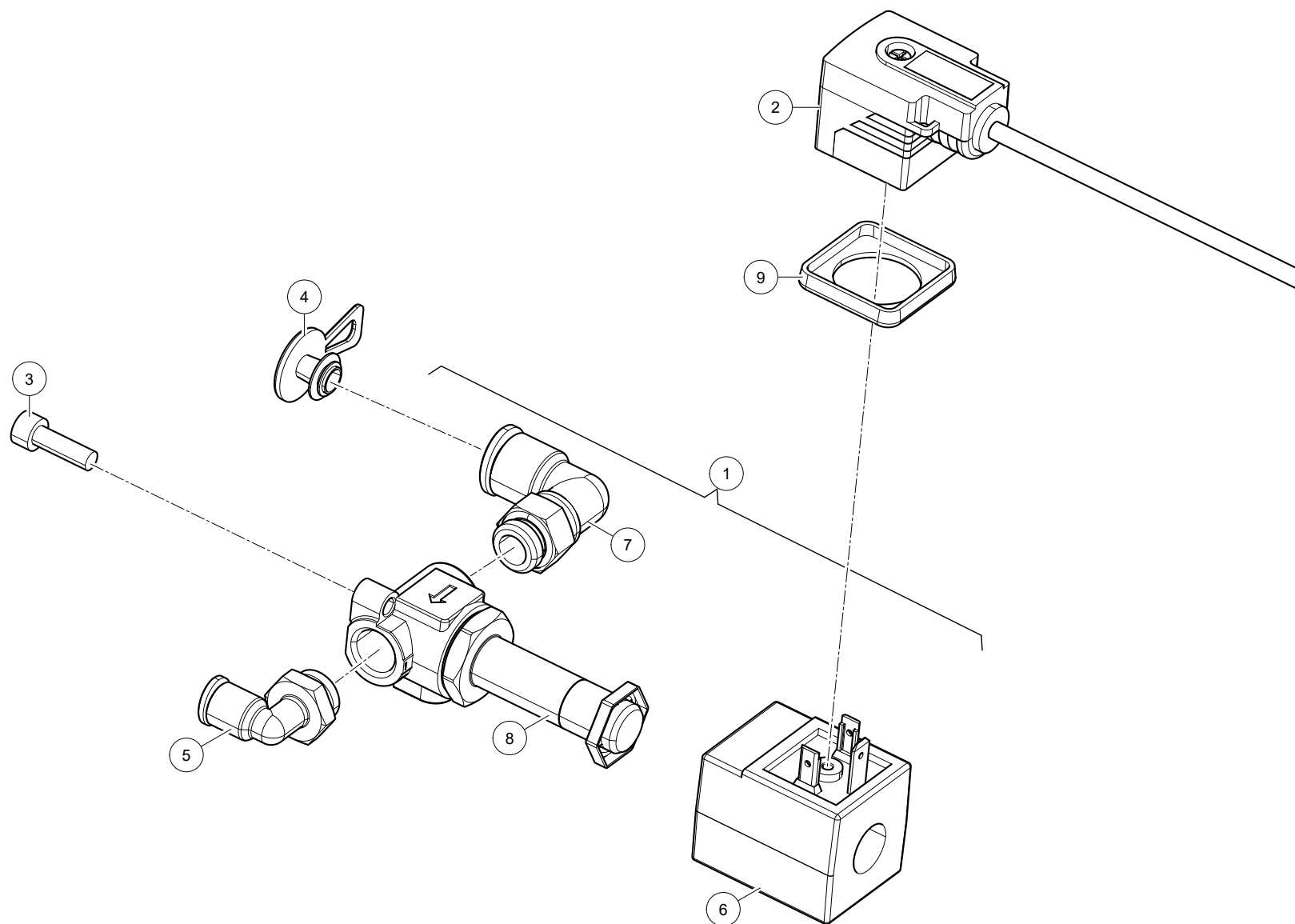
Lely Astronaut A5

Milk Transport

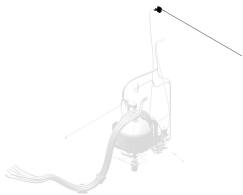
5.1X05.00XX-X

0003242094

Ref.	Part No	Qty.	Description	Techn. info	Criticality	Remark
1	5.1003.0373.0	1	Valve			
2	9.1138.0064.5	1	Tube	PUN-H Blue 6mm L = 2800		
3	5.1005.3564.0	1	Unit blow empty 3-A			
4	5.1005.5385.0	1	Non-return valve	Blow Empty		
5	5.1005.5386.0	1	Adapter	NRV Valve seat		
6	5.1005.5387.0	[R] 1	Non-return valve	Blow empty		
	5.1105.5387.0	[L] ~	Non-return valve	Blow empty		
7	5.1005.5936.0	1	Behuizing			
8	9.1043.0298.0	1	O-ring	24.0x3.5 DIN11864A SERIE C		
9	9.1066.0041.3	1	Tri clamp	2"		
10	9.1130.0028.3	1	Tri clamp			
11	9.1138.1243.0	1	Push-pull nipple	PL 06-G04		
12	9.1185.0189.4	3	Clamp			
13	9.1185.1131.0	1	Seal			
14	9.1189.0300.0	1	Valve	BLOW EMPTY CHECK VALVE G1/2"		
15	9.1189.0302.0	1	Kit	Blow Empty Milk Line Components		
16	#####	1	Not separately			
17	#####	1	Not separately			
18	9.1189.0305.0	1	Gasket			



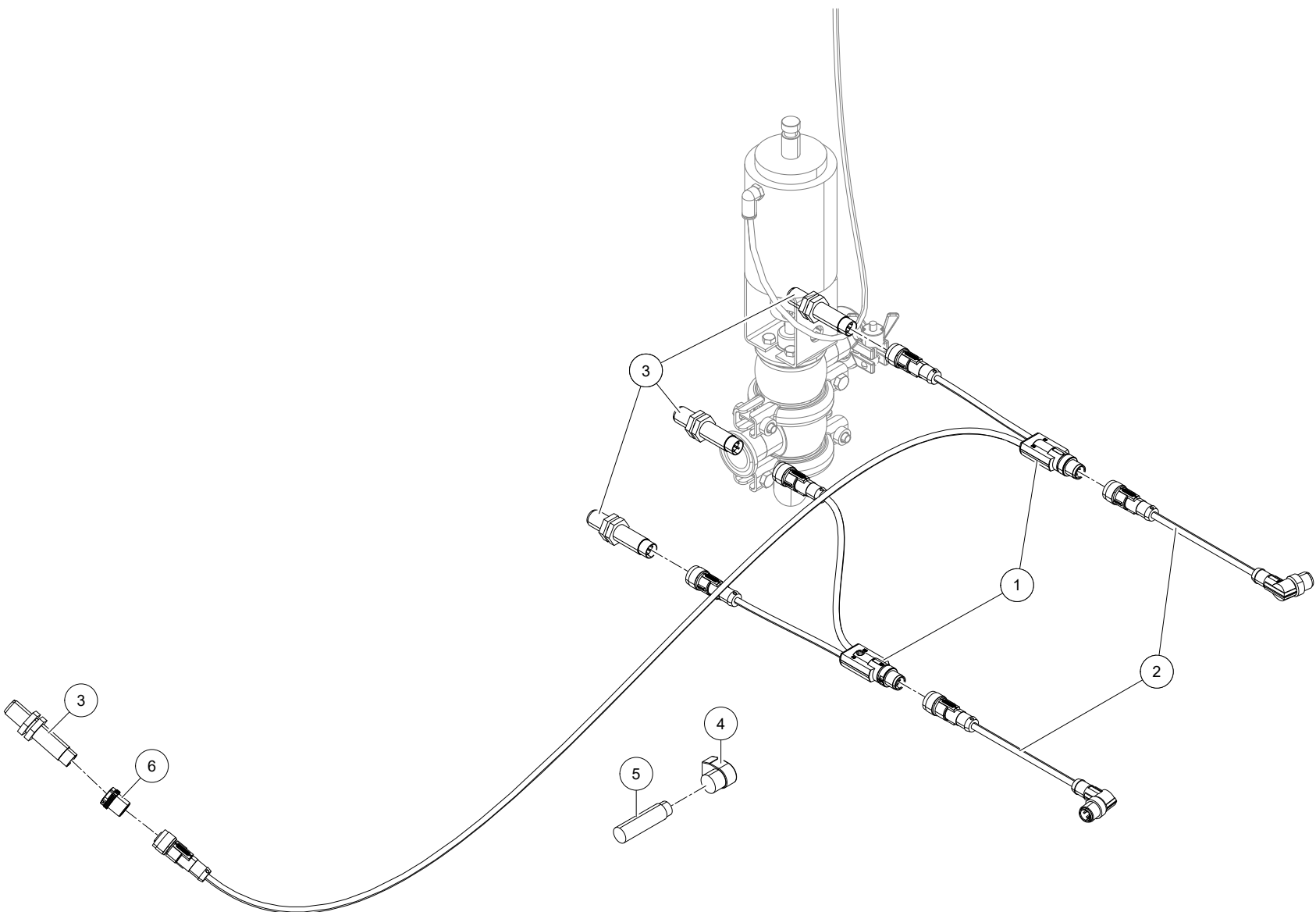


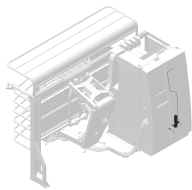


Lely Astronaut A5      Milk Transport      5.1X05.00XX-X      0003242094

Ref.	Part No	Qty.	Description	Techn. info	Criticality	Remark
1	5.1005.3417.0	1	Valve	Solenoid 4 mm orifice		
2	6.2001.1099.0	1	Cable	SAC-3P-MR/1.5-PUR/A-1L-Z SCO		
3	9.1057.0066.2	2	S.h. bolt	M5x16 DIN912-A2 s/s		
4	9.1108.0174.0	1	Plug	SKIFFY 464 0005 005 03		
5	9.1138.0017.0	1	Plug-in coupling	1/4"x6mm (└)		
6	9.1138.0810.0	1	Coil			
7	9.1138.1078.0	1	Plug-in coupling	1/4" x 10mm (└)		
8	#####	1	Not separately			
9	9.1138.1220.0	1	Gasket	Solenoid Connector DIN 43650 Type A		



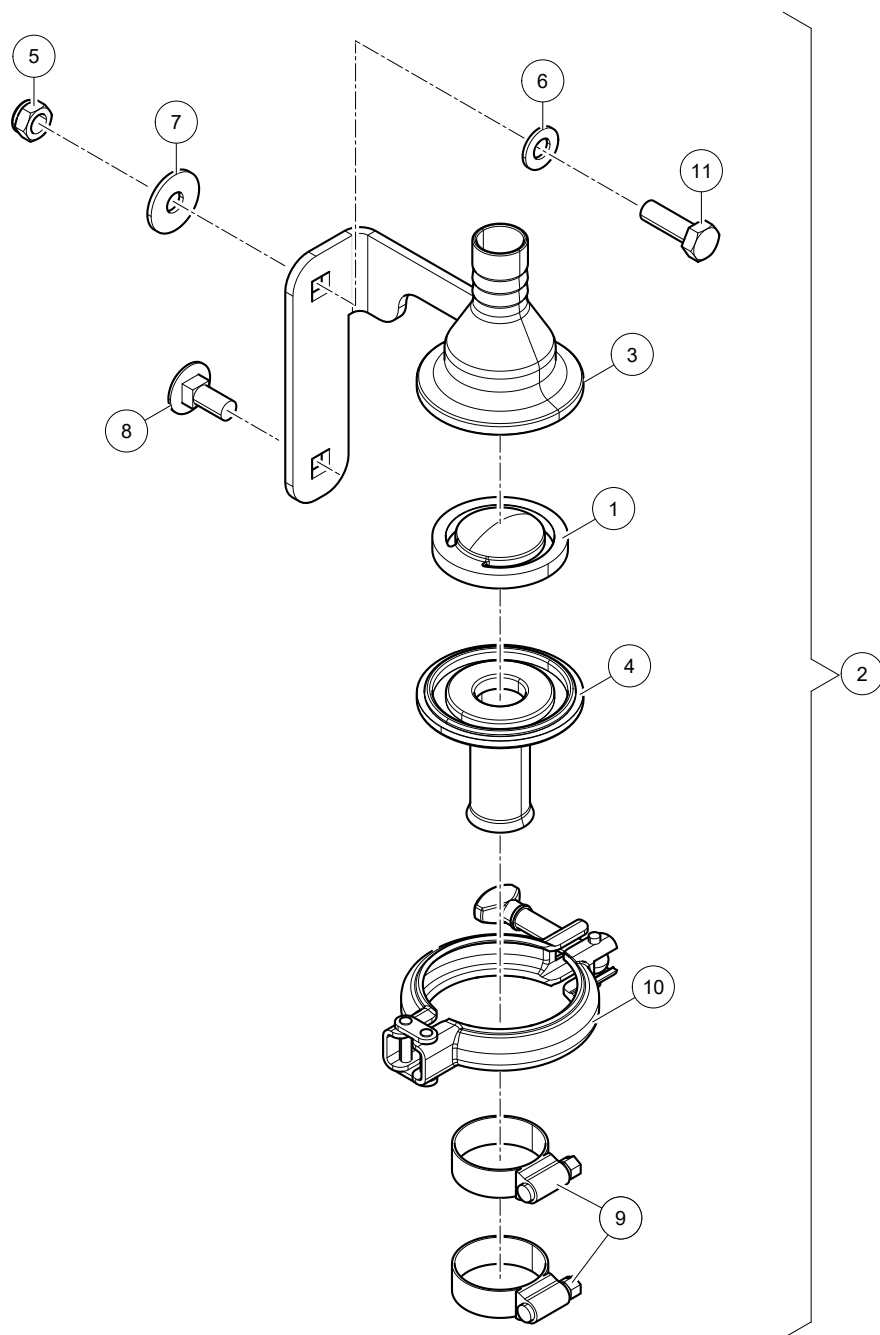




Lely Astronaut A5      Milk Transport      5.1X05.00XX-X      0003242094

Ref.	Part No	Qty.	Description	Techn. info	Criticality	Remark
1	6.2001.1012.0	2	Cable			
2	6.2001.1019.0	2	Cable			
3	9.1183.0066.0	4	Sensor	With M12 connector		
4	9.1185.0776.5	1	Plug	24VDC		
5	9.1185.0781.3	1	Switch			
6	9.1186.1059.0	1	Plug	M12 screw plug SPEEDCON		



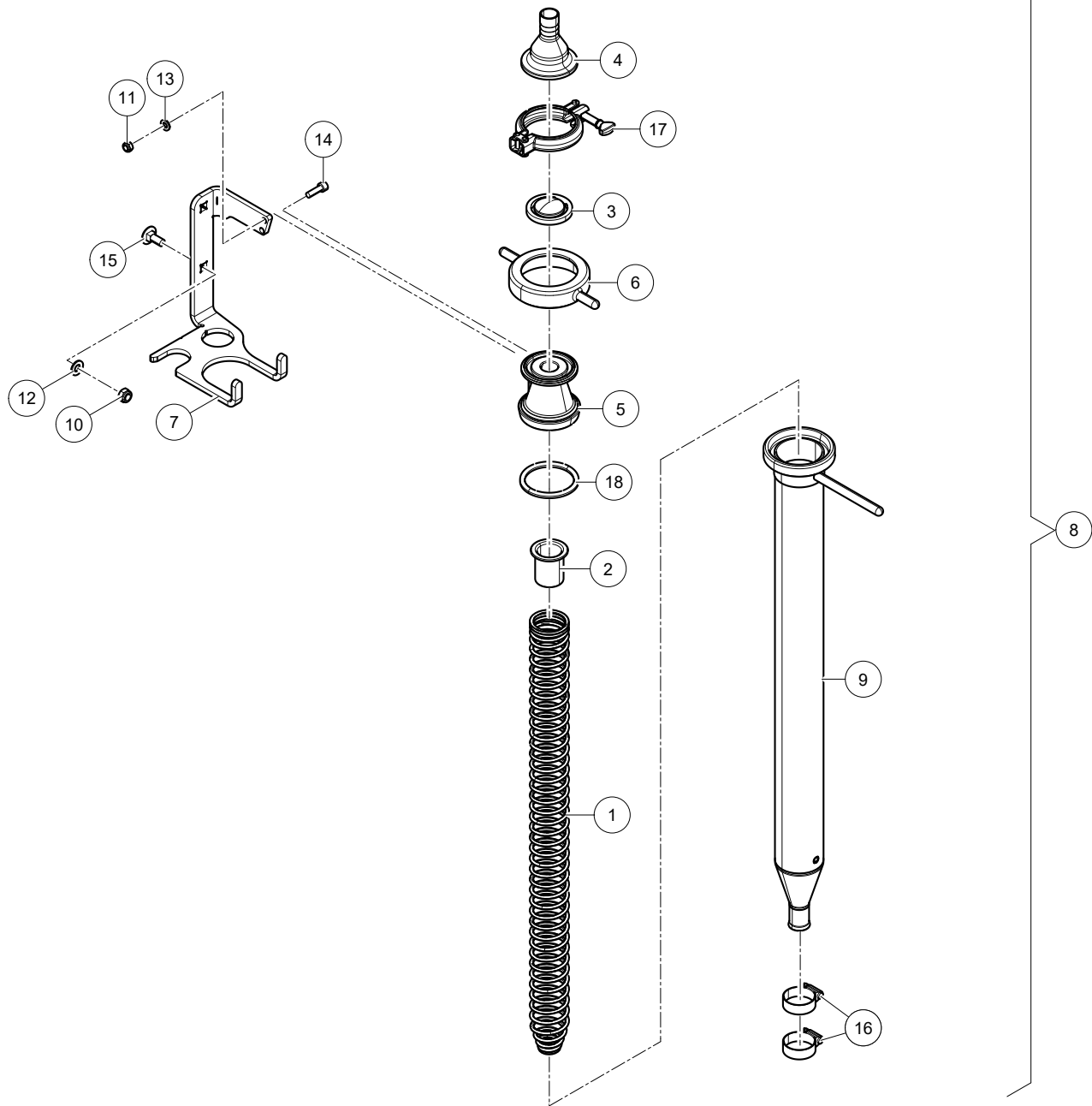




Lely Astronaut A5      Milk Transport      5.1X05.00XX-X      0003242094

Ref.	Part No	Qty.	Description	Techn. info	Criticality	Remark
1	5.1003.0373.0	1	Valve			
2	5.1003.7240.0	1	Non-return valve			
3	5.1003.7250.0	1	Valve housing (half)			
4	5.1003.7260.0	1	Valve housing (half)			
5	9.1030.0020.4	2	Nut	M8 DIN985-A2-2 s/s		
6	9.1048.0050.2	2	Washer	A8.4 DIN125-A2 s/s		
7	9.1048.0052.4	2	Washer	A8.4 DIN9021-A2 s/s		
8	9.1058.0032.2	2	Coach bolt	M8x20 DIN603 s/s		
9	9.1066.0021.4	2	Hose clamp	ø25-ø35 s/s		
10	9.1066.0041.3	1	Tri clamp	2"		
11	9.1113.0167.5	2	Bolt	M8x25 DIN933-A2-2 s/s		







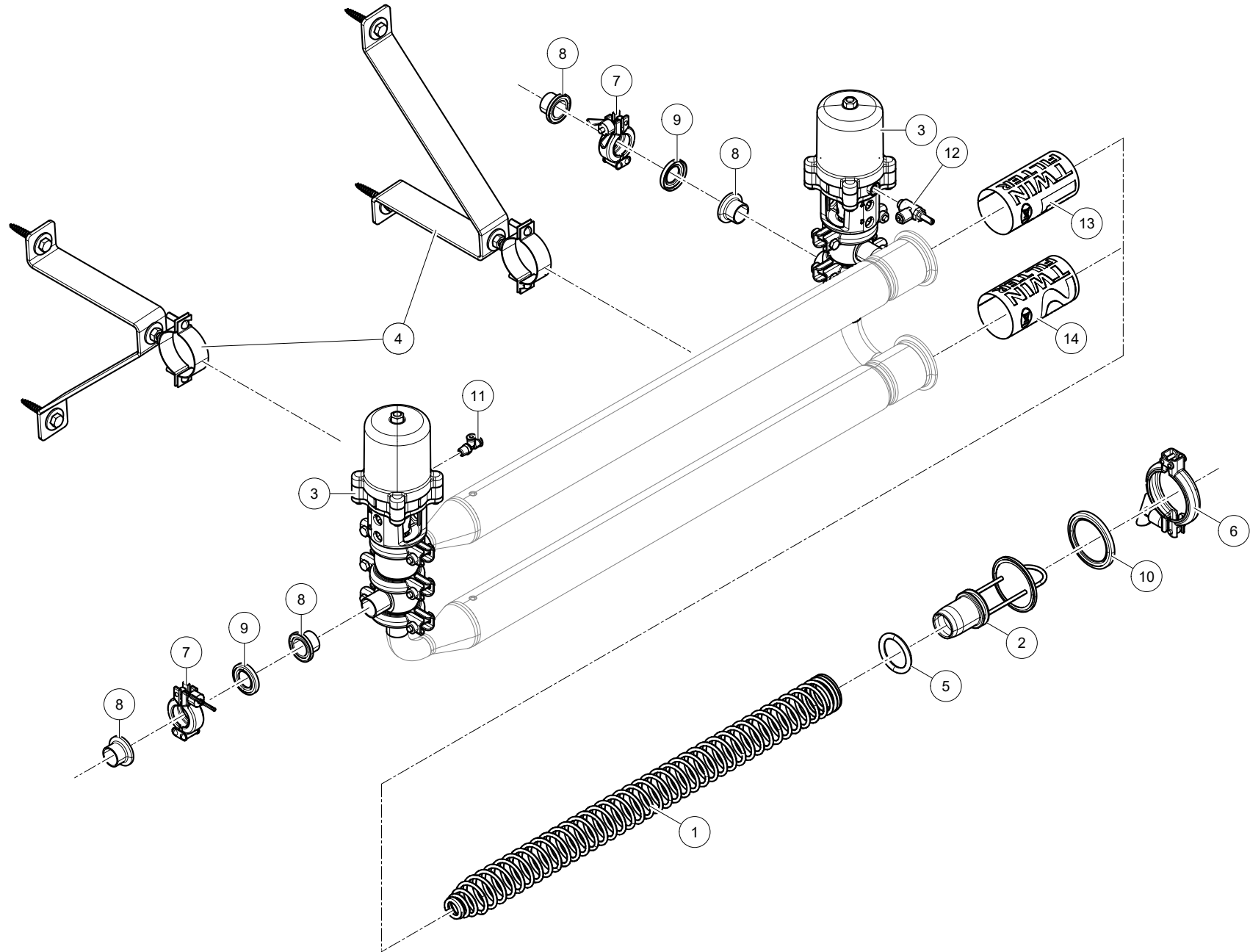
Lely Astronaut A5

Milk Transport

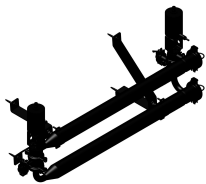
5.1X05.00XX-X

0003242094

Ref.	Part No	Qty.	Description	Techn. info	Criticality	Remark
1	5.1002.6692.0	1	Spring			
2	5.1002.7108.0	1	Insert			
3	5.1003.0373.0	1	Valve			
4	5.1003.1356.0	1	Welding nipple			
5	5.1003.1357.0	1	Housing			
6	5.1003.1359.0	1	Swivel nut			
7	5.1003.1473.0	1	Bracket			
8	5.1003.6061.0	1	Milk filter			
9	5.1003.6160.0	1	Filter housing			
10	9.1030.0020.4	2	Nut	M8 DIN985-A2-2 s/s		
11	9.1030.0021.5	2	Nut	M6 DIN985-A2-2 s/s		
12	9.1048.0050.2	2	Washer	A8.4 DIN125-A2 s/s		
13	9.1048.0090.0	2	Washer	A6.4 DIN125-A2 s/s		
14	9.1057.0092.0	2	S.h. bolt	M6x20 DIN912-A2 s/s		
15	9.1058.0032.2	2	Coach bolt	M8x20 DIN603 s/s		
16	9.1066.0021.4	2	Hose clamp	ø25-ø35 s/s		
17	9.1066.0041.3	1	Tri clamp	2"		
18	9.1185.0092.5	1	O-ring	NW50		



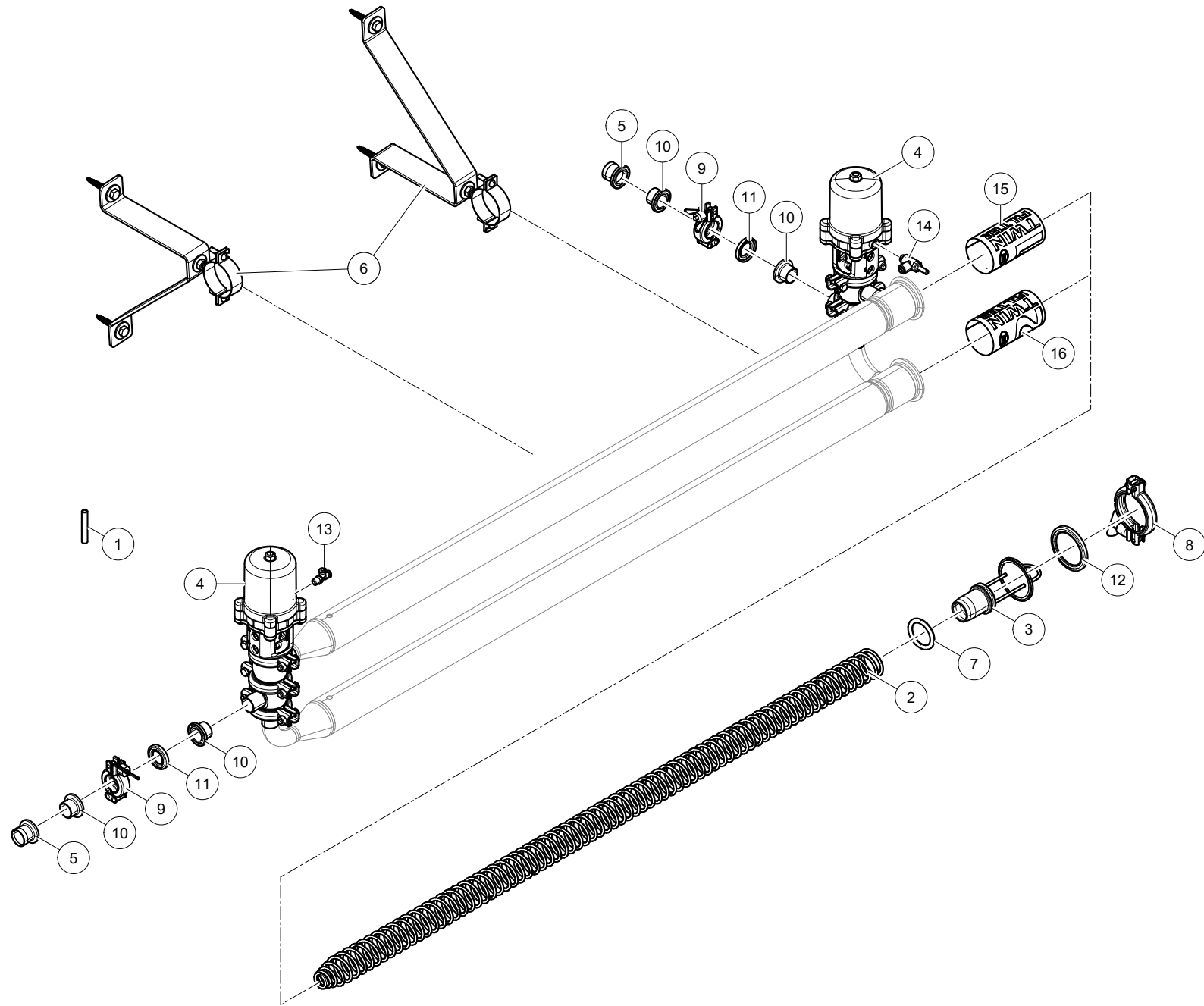




Lely Astronaut A5      Milk Transport      5.1X05.00XX-X      0003242094

Ref.	Part No	Qty.	Description	Techn. info	Criticality	Remark
1	5.1002.6692.0	2	Spring			
2	5.1003.6631.0	2	Holder			
3	#####	2	Not separately			(see page 56)
4	5.1004.5468.0	1	Bracket			(see page 58)
5	9.1043.0282.0	2	O-ring	35x6 NBR 366237 50° SHORE		
6	#####	2	Not separately			
7	9.1066.0065.6	2	Tri clamp	NW 10/20		
8	#####	4	Not separately			
9	9.1130.0028.3	2	Tri clamp			
10	9.1137.0420.3	2	Tri clamp			
11	9.1138.0196.4	1	Plug-in coupling	1/8"-4-4mm (T)		
12	9.1138.0944.0	1	Speedcontrol valve			
13	9.1170.0874.4	1	Decal	"Lely twin filter 1"		
14	9.1170.0875.5	1	Decal	"Lely twin filter 2"		





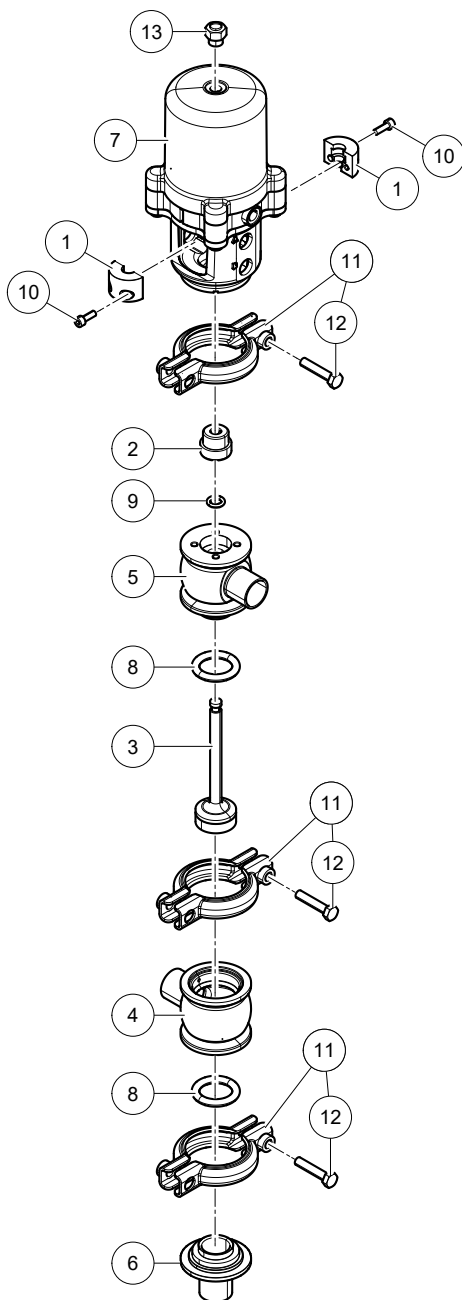


Lely Astronaut A5      Milk Transport      5.1X05.00XX-X      0003242094

Ref.	Part No	Qty.	Description	Techn. info	Criticality	Remark
1	#####	2	Not separately			
2	5.1003.0602.0	2	Spring			
3	5.1003.6631.0	2	Holder			
4	#####	2	Not separately			(see page 56)
5	5.1003.7769.0	2	Tube reducer			
6	5.1004.5468.0	1	Bracket			(see page 58)
7	9.1043.0282.0	2	O-ring	35x6 NBR 366237 50° SHORE		
8	#####	2	Not separately			
9	9.1066.0065.6	2	Tri clamp	NW 10/20		
10	#####	4	Not separately			
11	9.1130.0028.3	2	Tri clamp			
12	9.1137.0420.3	2	Tri clamp			
13	9.1138.0196.4	1	Plug-in coupling	1/8"-4-4mm (T)		
14	9.1138.0944.0	1	Speedcontrol valve			
15	9.1170.0874.4	1	Decal	"Lely twin filter 1"		
16	9.1170.0875.5	1	Decal	"Lely twin filter 2"		



$$\textcircled{90} = \textcircled{8} + \textcircled{9}$$

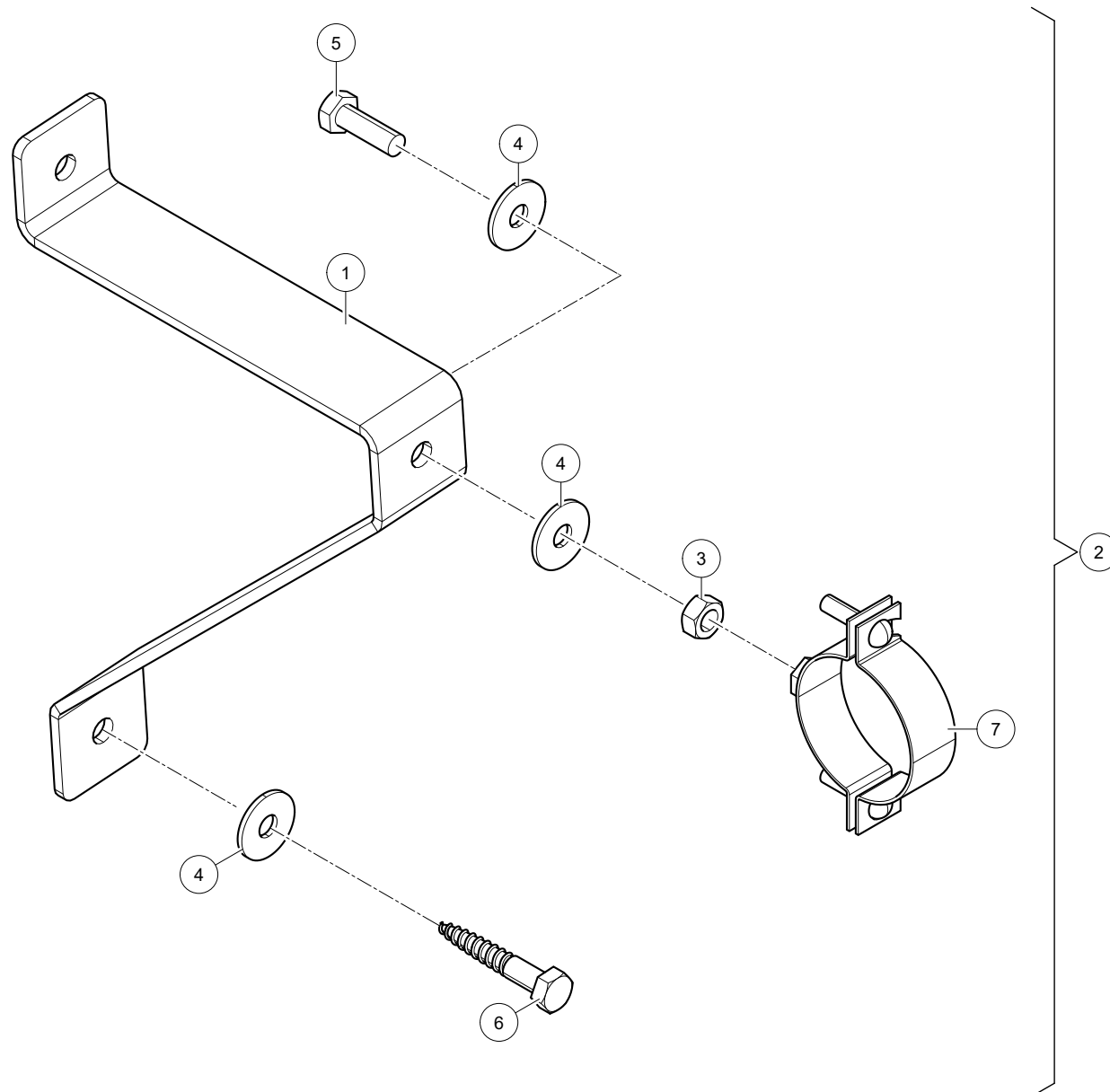


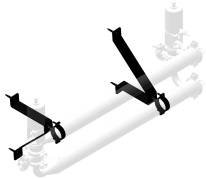


Lely Astronaut A5      Milk Transport      5.1X05.00XX-X      0003242094

Ref.	Part No	Qty.	Description	Techn. info	Criticality	Remark
1	5.1003.0574.0	2	Clamping piece			
2	5.1003.7003.0	1	Guide			
3	5.1003.7340.0	1	Plunger			
4	#####	1	Not separately			
5	#####	1	Not separately			
6	#####	1	Not separately			
7	#####	1	Not separately			
8	9.1043.0141.0	2	O-ring	23.16x5.33 EPDM		
9	9.1043.0227.0	1	O-ring	7.78x2.55		
10	9.1057.0160.5	2	Screw	M4x12 DIN912 s/s		
11	9.1066.0070.4	3	Tri clamp	NW25-40		
12	9.1057.0519.0	6	Socket head screw	M6x25 DIN912-A4 S/S TUFLOK		
13	9.1138.1084.0	1	Filter	1/8" BSP Silencer ( st.st), AISI 302		
90	5.1005.5434.0	1	Set	3-way valve o-ring set		



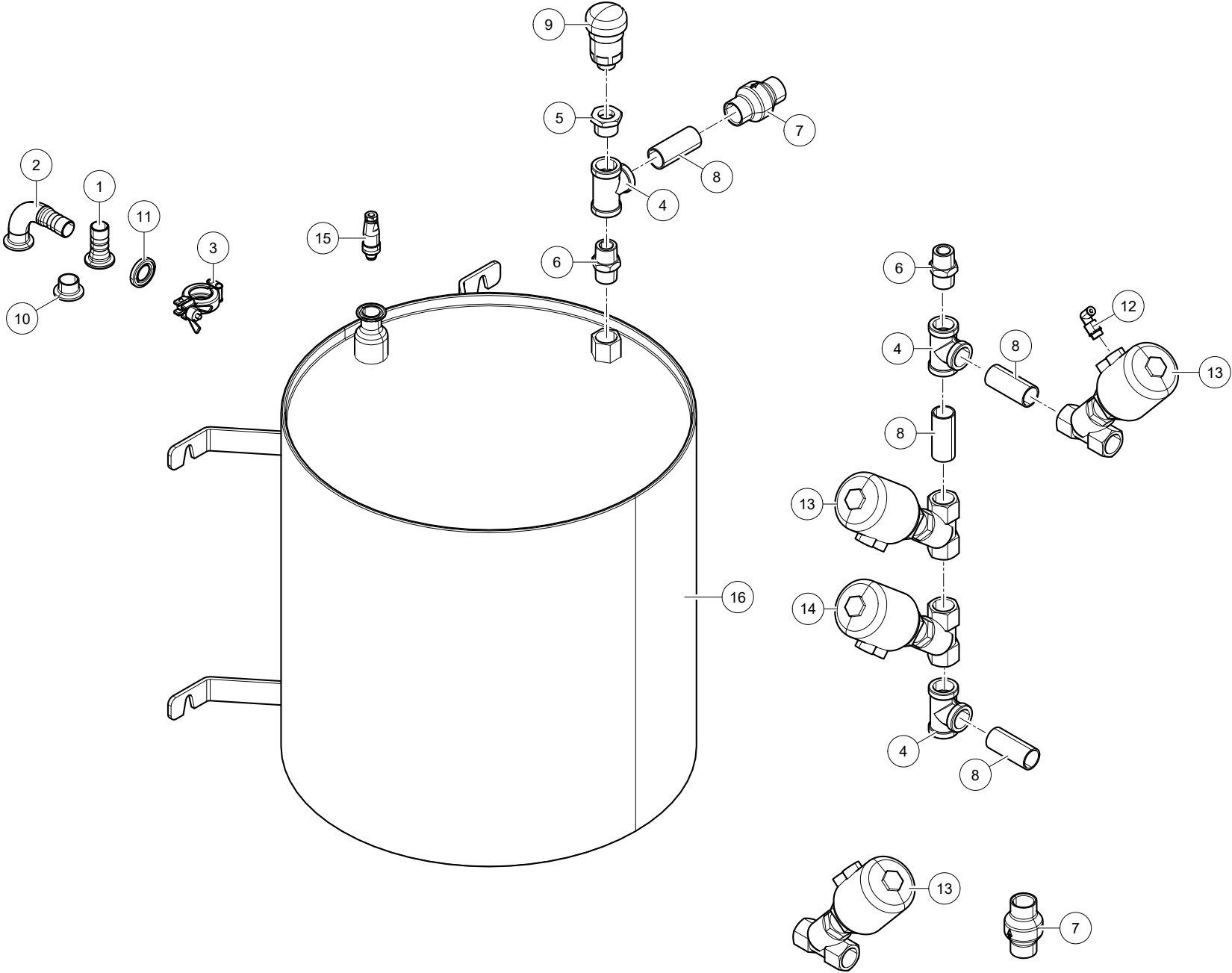




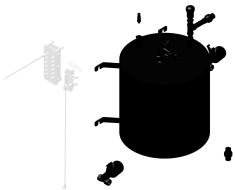
Lely Astronaut A5      Milk Transport      5.1X05.00XX-X      0003242094

Ref.	Part No	Qty.	Description	Techn. info	Criticality	Remark
1	5.1004.5241.0	2	Plate			
2	5.1004.5468.0	1	Bracket			
3	9.1029.0029.0	2	Nut	M8 DIN934-A2-2 s/s		
4	9.1048.0052.4	8	Washer	A8.4 DIN9021-A2 s/s		
5	9.1113.0167.5	2	Bolt	M8x25 DIN933-A2-2 s/s		
6	9.1114.0039.2	4	Bolt	M8x50 DIN571-A2 s/s		
7	9.1137.1012.0	2	Bracket			





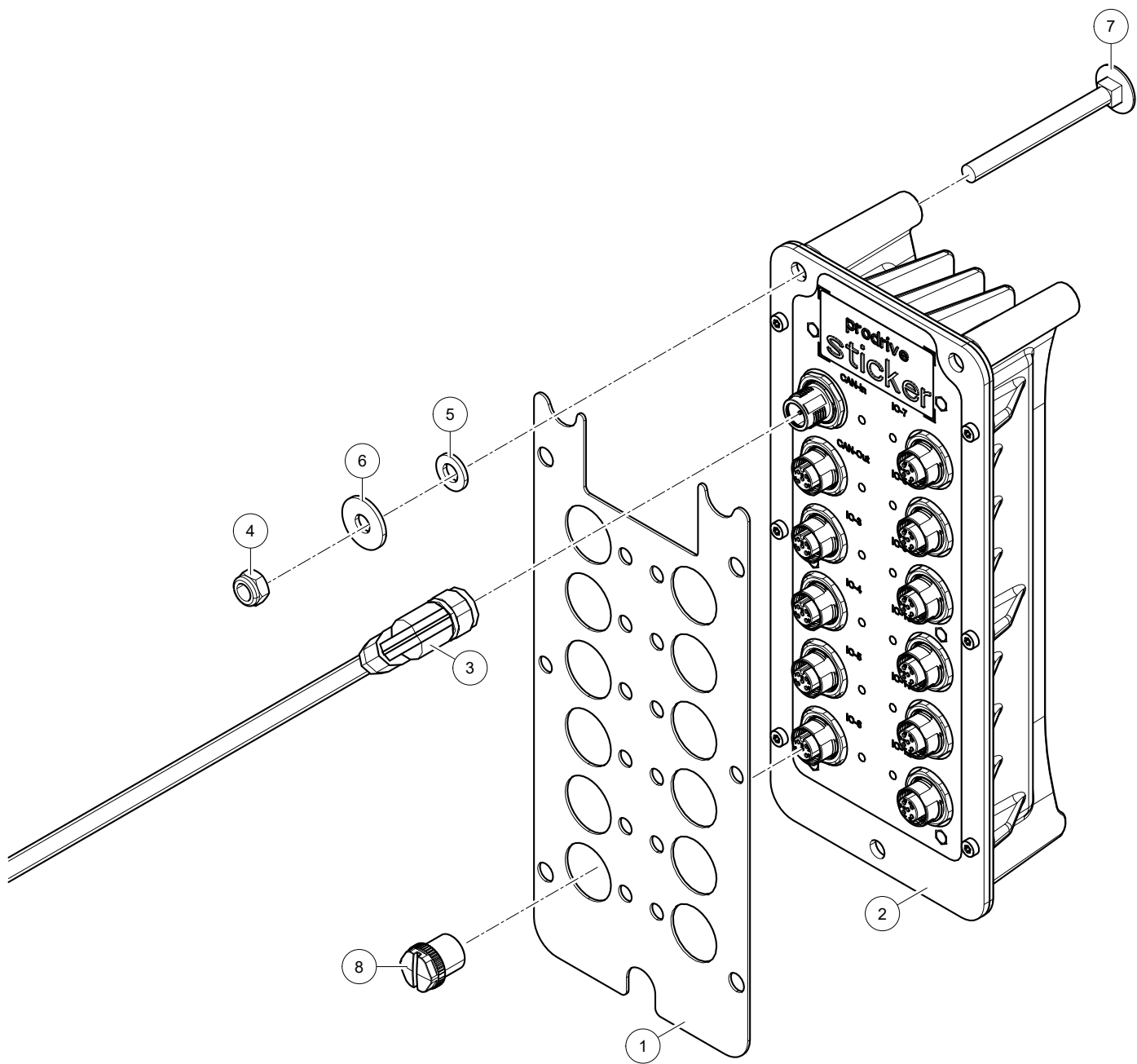


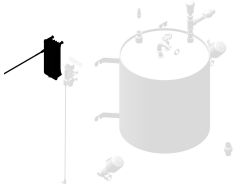


Lely Astronaut A5      Milk Transport      5.1X05.00XX-X      0003242094

Ref.	Part No	Qty.	Description	Techn. info	Criticality	Remark
1	5.1004.5853.0	1	Nipple			
2	5.1080.0731.0	1	Milk hose connection	90° weld.		
3	9.1066.0065.6	2	Tri clamp	NW 10/20		
4	9.1129.0063.4	3	T-piece			
5	9.1129.0086.6	1	Reduction ring	1/2"-3/4"		
6	9.1129.0087.0	2	Double nipple	3/4" AISI316		
7	9.1129.0114.0	2	Valve	3/4"		
8	9.1129.0121.0	4	Pipe nipple	G3/4" L=60 s/s		
9	9.1129.0122.0	1	Aerator	1/2" SEPPELFRICKE ART NR. 0488180 DN15		
10	#####	2	Not separately			
11	9.1130.0028.3	2	Tri clamp			
12	9.1138.0289.5	2	Plug-in coupling	1/4"x4mm ( L )		
13	9.1138.1044.0	3	Valve NC	3/4"		
14	9.1138.1057.0	1	Valve NO	3/4"" s/s 316		
15	9.1186.1067.0	1	Connector	M12 A		
16	9.1187.0002.4	1	Compact tube cooler			



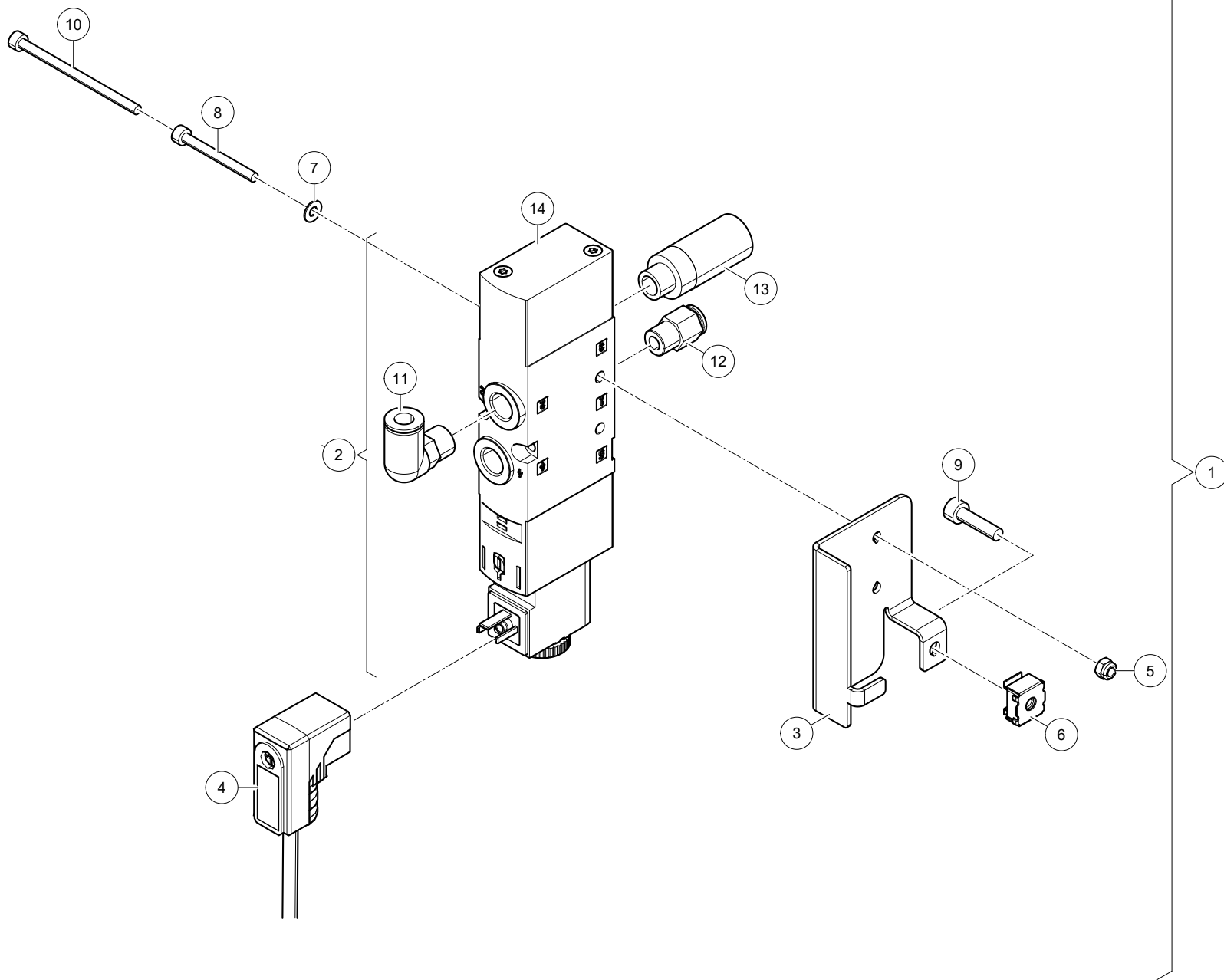


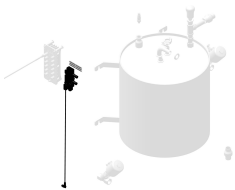


Lely Astronaut A5      Milk Transport      5.1X05.00XX-X      0003242094

Ref.	Part No	Qty.	Description	Techn. info	Criticality	Remark
1	5.1005.3050.0	1	Label			
2	6.2001.0275.0	1	Module	LPT1 - LOW POWER GIOB		
3	6.2001.1041.0	1	Cable			
4	9.1030.0021.5	3	Nut	M6 DIN985-A2-2 s/s		
5	9.1048.0090.0	3	Washer	A6.4 DIN125-A2 s/s		
6	9.1048.0095.5	3	Washer	A6.4 DIN9021-A2 s/s		
7	9.1058.0059.1	3	Coach bolt	M6x65 DIN603-A2 s/s		
8	9.1186.1059.0	12	Plug	M12 screw plug SPEEDCON		







Lely Astronaut A5      Milk Transport      5.1X05.00XX-X      0003242094

Ref.	Part No	Qty.	Description	Techn. info	Criticality	Remark
1	5.1005.3212.0	1	Valve ass.			
2	5.1005.5302.0	1	Valve			
3	#####	1	Not separately			
4	6.2001.1047.0	1	Cable	SAC-3P-MR/0.6-PUR/C-1L-Z SCO		
5	9.1030.0042.5	2	Nut	M3 DIN985-A2-2 s/s		
6	9.1036.0105.0	1	Cage nut	M4		
7	9.1048.0100.3	2	Washer	A3.2 DIN125-A2 s/s		
8	9.1057.0073.2	2	S.h. bolt	M3x30 DIN912-A2 s/s		
9	9.1057.0084.6	1	S.h. bolt	M4x16 DIN912-A2 s/s		
10	9.1057.0239.0	2	Socket head screw			
11	9.1138.0049.4	2	Plug-in coupling	1/8"x6mm (└)		
12	9.1138.0923.0	1	Coupling straight	1/8"x6		
13	9.1138.0988.0	2	Silencer	G1/8"		
14	9.1138.1271.0	1	Valve block			





INTENTIONALLY BLANK



**Lely Industries N.V.**

Cornelis van der Lelylaan 1

NL-3147 PB Maassluis

Tel +31 (0)88 - 12 28 221

Fax +31 (0)88 - 12 28 222

